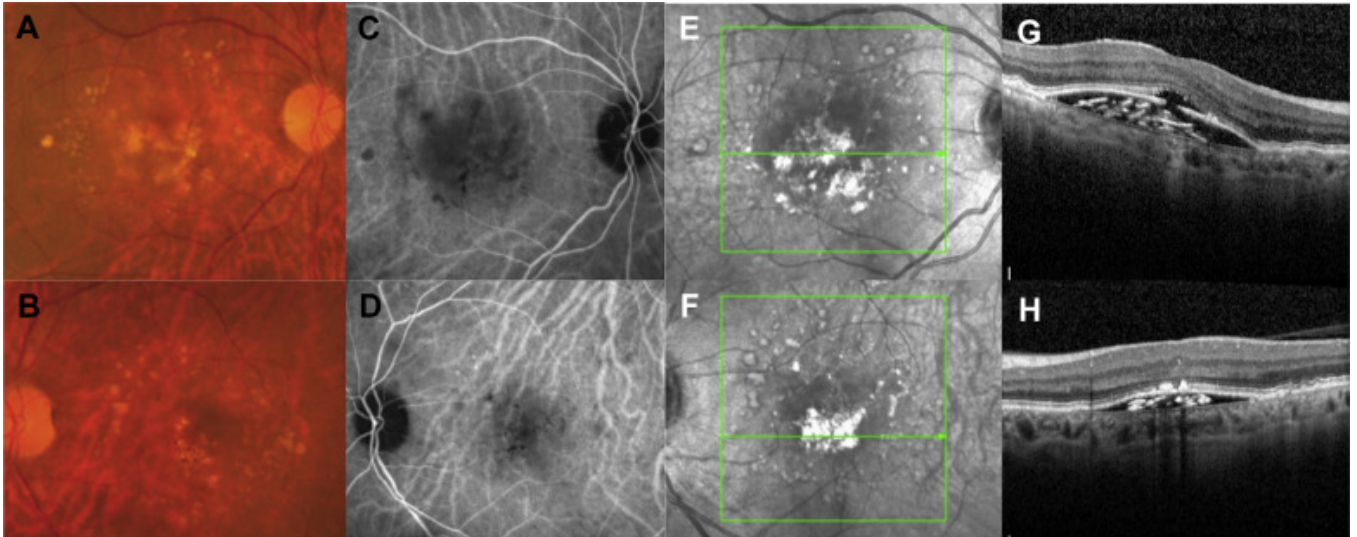


The Onion Sign in Avascular Pigment Epithelial Detachments Secondary to Age-Related Macular Degeneration



A 60-year-old man underwent a routine check-up. Best-corrected visual acuity was 20/20 in both eyes with nuclear cataracts. Fundus examination showed drusen, refractile yellowish deposits, and pigmentary alterations (A, B). Spectral-domain OCT demonstrated prominent multilaminar hyperreflective bands beneath large serous nonvascularized pigment epithelial detachments bilaterally (G, H), along with a retinal pigment epithelium (RPE) aperture and elongation of photoreceptor outer segments in the right eye (G). This striking appearance, termed the *onion sign*, represents sub-RPE cholesterol crystals. Near infrared reflectance displayed these structures more prominently as areas of hyperreflectance (E, F). Indocyanine green angiography (C, D) confirmed the absence of choroidal neovascularization.