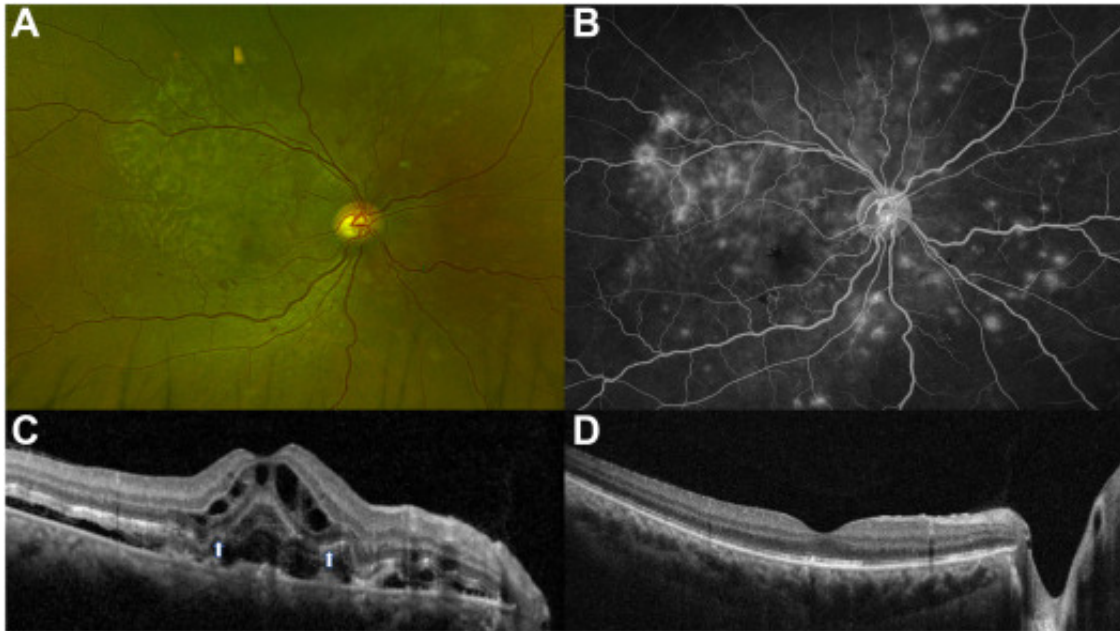


# Bacillary Layer Detachment in Hypertensive Retinopathy



A 42-year-old man with recent hospitalization for uncontrolled hypertension (blood pressure, 167/114 mmHg) and end-stage renal disease presented with blurry vision. Fundus photography showed vascular tortuosity, intraretinal hemorrhages, cotton wool spots, and subretinal and intraretinal fluid (**A**) consistent with hypertensive retinopathy. Late-phase fluorescein angiogram showed multiple nummular areas of choroidal hyperfluorescence consistent with Elschnig spots (**B**). An OCT scan demonstrated subretinal and intraretinal fluid (**C**), as well as a subfoveal bacillary layer detachment (**C**, arrows). At 3-month follow-up after normalization of blood pressure, the OCT scan showed complete resolution of the bacillary layer detachment and subretinal and intraretinal fluid (**D**). (Magnified version of Figure **A-D** is available online at [www.opthalmologyretina.org](http://www.opthalmologyretina.org)).