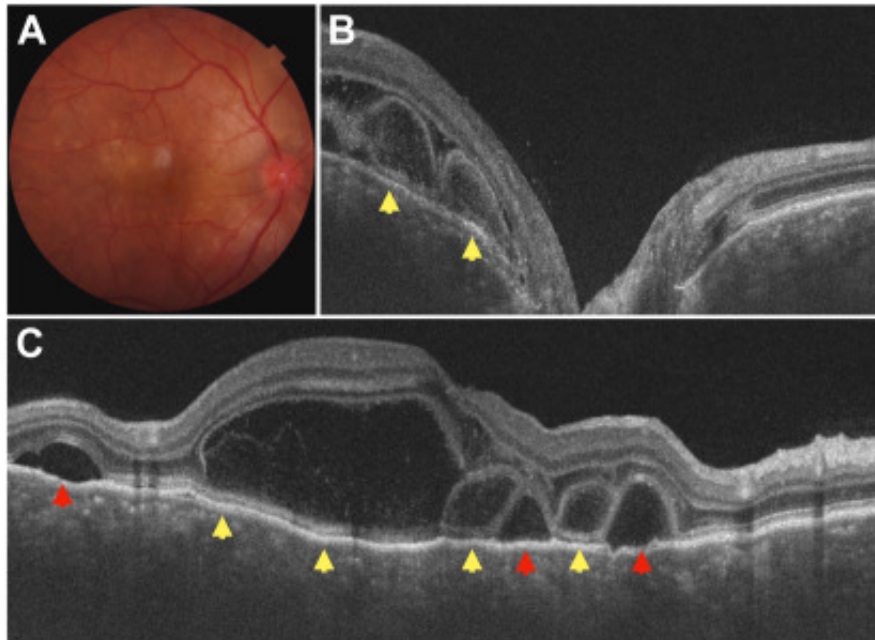


Bacillary Layer Detachment in a Patient with Sympathetic Ophthalmia



A 52-year-old man developed sympathetic ophthalmia in his right eye 4 weeks after trauma to the left eye by a wooden stick. The diagnosis was based on anterior chamber inflammation and pockets of subretinal fluid in the macula and peripapillary retina (**A**). OCT showed a thickened choroid; multiple hyporeflective spaces in the outer retina, lined externally by the ellipsoid zone, suggestive of bacillary layer detachment (**B** and **C**, yellow arrows); and areas of neurosensory detachment (**C**, red arrows). Bacillary layer detachment is a recently described finding in inflammatory and noninflammatory retinal conditions. This case highlights the development of bacillary layer detachment in sympathetic ophthalmia.

Article info

Copyright

© 2022 by the American Academy of Ophthalmology