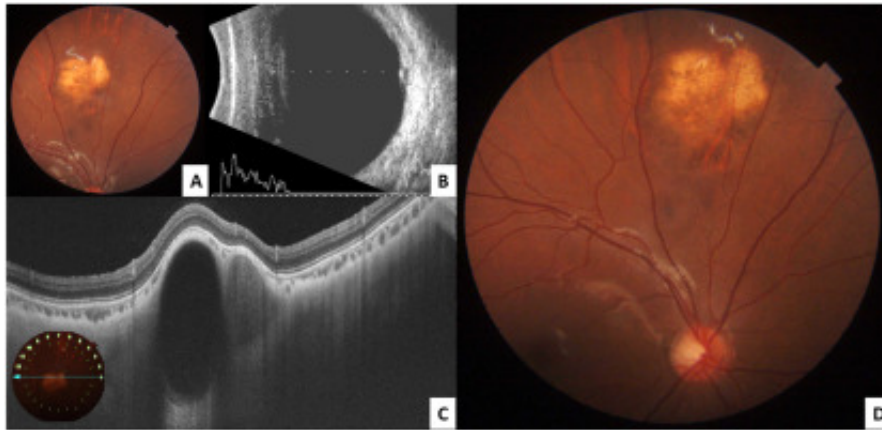


Bilobed Focal Scleral Nodule in a Young Girl



Clinical examination of a young girl revealed an elevated hypopigmented lesion superior to the disc with lobulated edges and altered pigmentation (**A**). Ultrasonography revealed a well-defined cystic lesion with high surface echogenicity and a hypoechoic cavity (**B**). OCT revealed a lobular lesion causing compression of the overlying choriocapillaris (**C**). The bilobed cavity exhibited well-defined segregated homogenous hyporeflective and heterogeneous hyperreflective areas. These findings were consistent with the diagnosis of a focal scleral cyst. Two years later, the lesion was stable in size with no change in appearance (**D**). The bilobed nature of the lesion in our patient is a unique presentation not previously described. (Magnified version of Figure **A-D** is available online at www.opthalmologyretina.org).