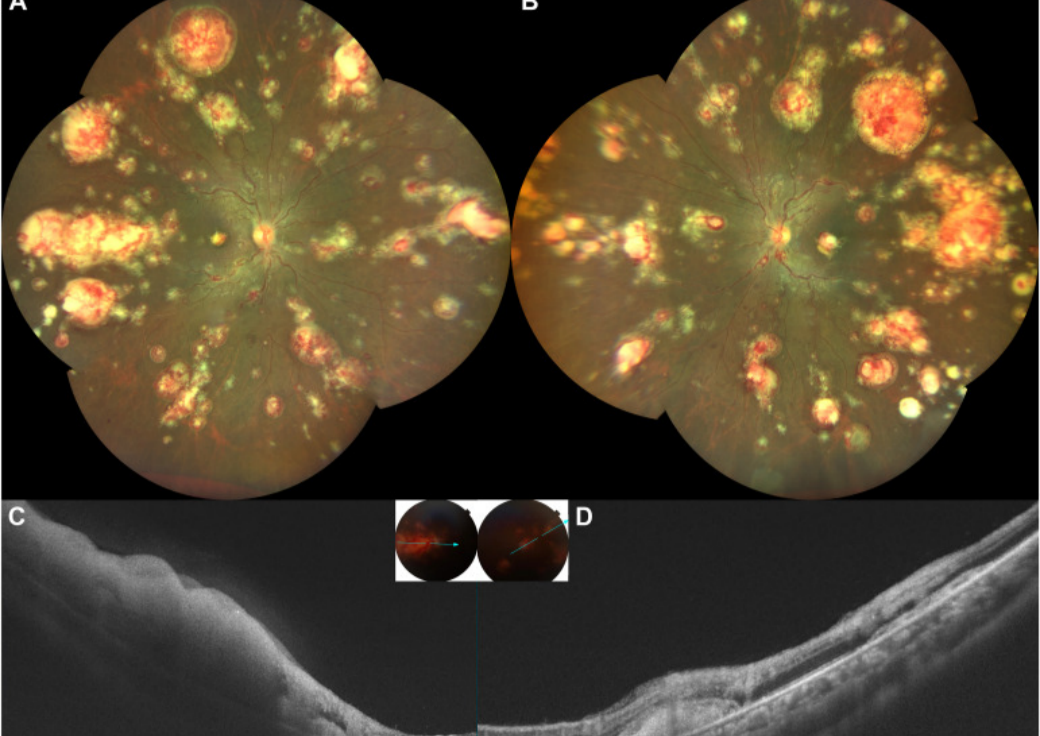


Bilateral Massive Retinal Infiltrates: Sign of Blast Crisis in Chronic Myeloid Leukemia



A 28-year-old Indian woman with chronic phase-chronic myeloid leukemia (CML), on oral Imatinib 400 mg once a day, presented with complaints of decreased vision in both eyes for 1 week. Her visual acuity was 20/160 in both eyes. **A-B**, Retinal evaluation revealed bilateral tortuous, dilated retinal veins, and multifocal, symmetrical, retinal infiltrates ranging from 1 to 8-disc diameters. **C**, Swept source-OCT passing through the lesions showed full-thickness homogenous hyperreflectivity of the retina, subretinal hyperreflectivity with thickened external limiting membrane, and inner retinal hyperreflectivity (**D**). Treatment for the CML relapse was initiated by her hematologist.

(Magnified version of Figure **A-D** is available online at www.aaojournal.org).

To read this article in full you will need to make a payment

Article info

Publication history

Published online: September 13, 2023

Accepted: August 14, 2023

Received in revised form: August 8, 2023

Received: July 19, 2023

Publication stage

In Press Journal Pre-Proof

Identification

DOI:

<https://doi.org/10.1016/j.opthta.2023.08.010>

Copyright

© 2023 by the American Academy of Ophthalmology

ScienceDirect

[Access this article on ScienceDirect](#)