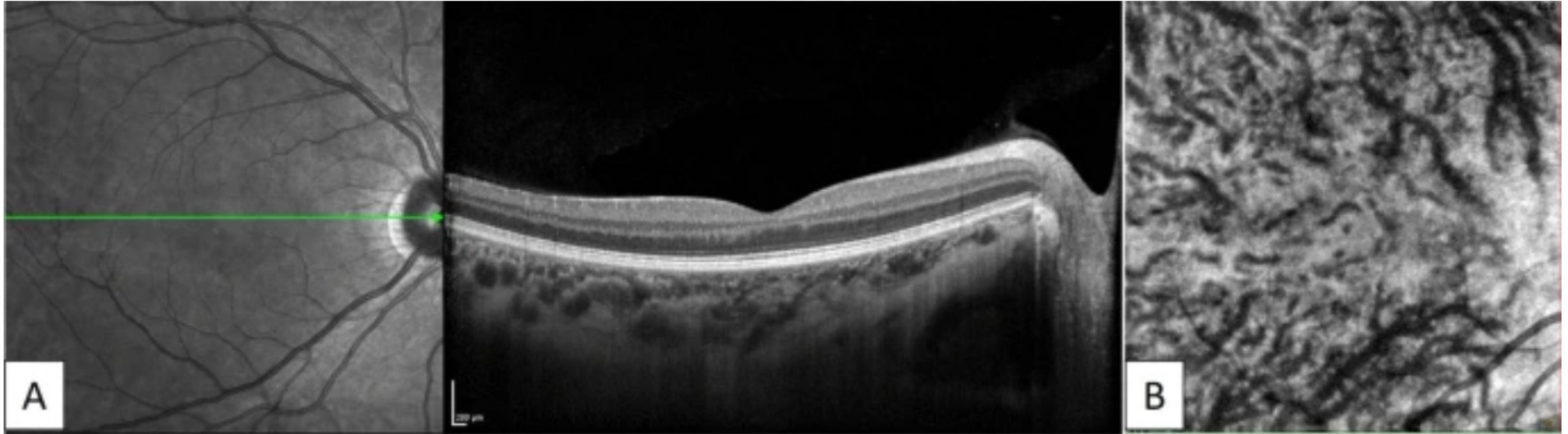


Images of the healthy right eye of a 47-year-old woman in the control group. A) A horizontal EDI-OCT image through the fovea revealed normal appearance of the retina and choroid. B) En-face OCT image (6 × 6 mm) through the fovea showed dilated vortex veins in the deep layer of the choroid. Horizontal watershed is lost because of the anastomoses between the superior and inferior vortex veins

**Fig. 2**



Images of the healthy left eye of a 46-year-old man in the control group. A) A horizontal EDI-OCT image through the fovea revealed normal appearance of the retina and choroid. B) En-face OCT image ( $6 \times 6$  mm) through the fovea showed superior and inferior vortex veins are symmetrical, and the horizontal watershed zone through the macula is preserved