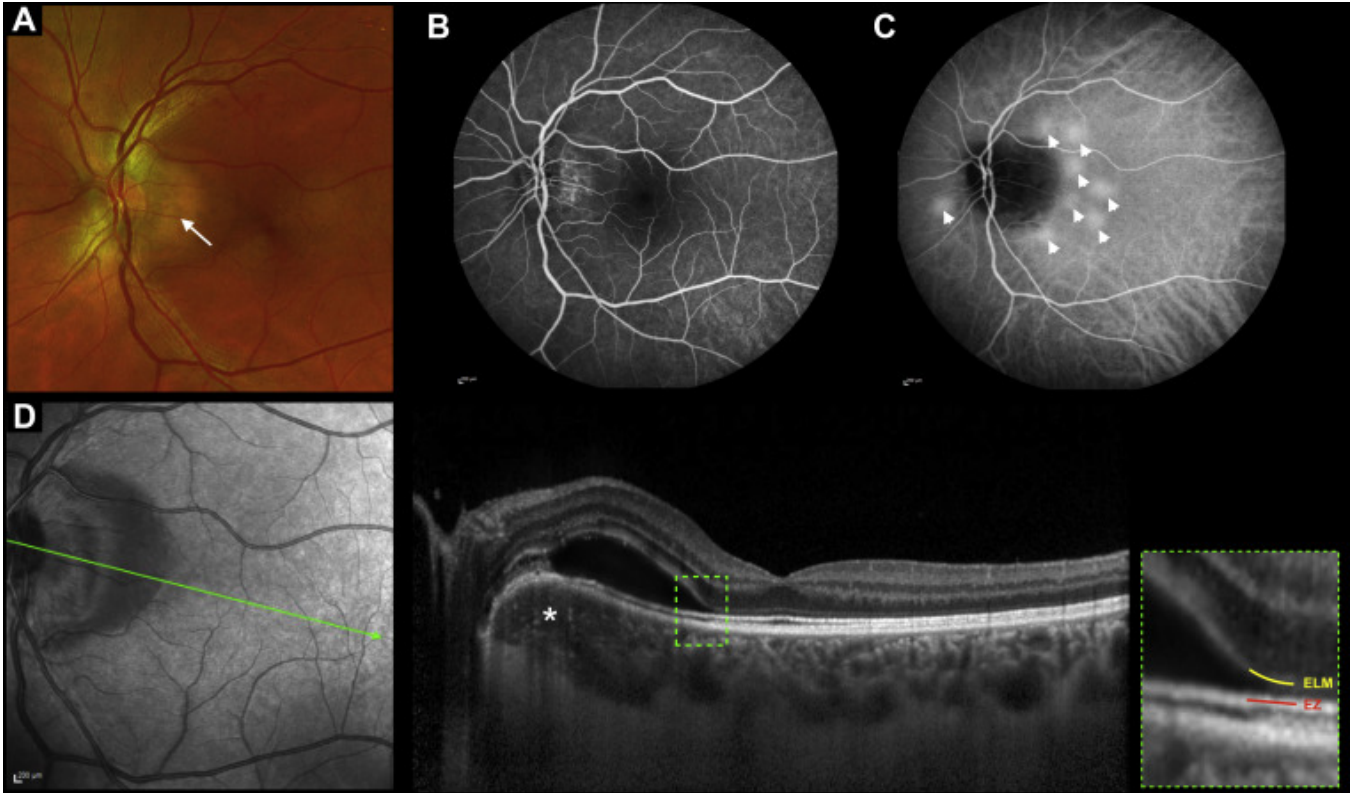


Bacillary Layer Detachment in Peripapillary Pachychoroid Syndrome



A 44-year-old woman was diagnosed with peripapillary pachychoroid syndrome. Fundus photography showed (A, arrow) juxtapapillary subretinal fluid with mild pigmentary changes. Late-phase fluorescein angiography illustrated (B) speckled hyperfluorescent window defects. Late-phase indocyanine green angiography demonstrated (C, arrowheads) multifocal peripapillary choroidal hyperpermeability. Enhanced depth imaging OCT revealed (D, green square) a thickened choroid with pachyvessels (asterisk) and a dome-shaped cystic retinal space with a split in the retina between the photoreceptor inner segment myoid and ellipsoid (bacillary layer). Histologically, the inner segment myoid represents a structural weakness relative to the robust junctional complexes of both the adjoining external limiting membrane and mitochondria-rich ellipsoid zone.