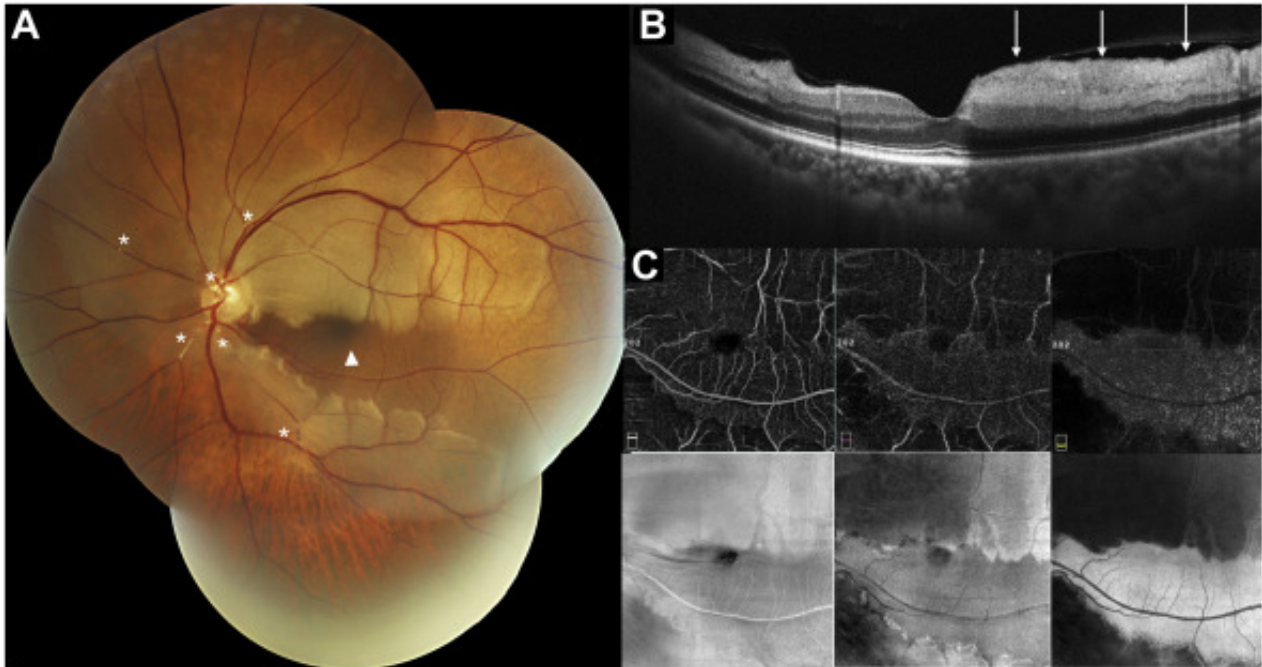


# Central Retinal Artery Occlusion with Cilioretinal Artery Sparing: Multimodal Analysis



A 70-year-old man presented with a 3-day history of vision loss in the left eye to 20/70. A fundus photograph of the left eye demonstrated multiple retinal artery emboli (**A**, asterisks) and diffuse retinal pallor sparing the inferior macular area (**A**, arrowhead). Vertical spectral-domain OCT revealed thickening and increased reflectivity of the inner retina in the perifoveal area (**B**, arrows). Note that the inferior macula served by the cilioretinal artery was spared (**B**). Spectral-domain OCT angiograms at the superficial and deep capillary plexus and choriocapillaris levels show a preserved band of the cilioretinal artery area adjacent to the compromised retinal area (blocked signal), better identified using en-face OCT (**C**).

## Article info

## Copyright

© 2021 by the American Academy of Ophthalmology