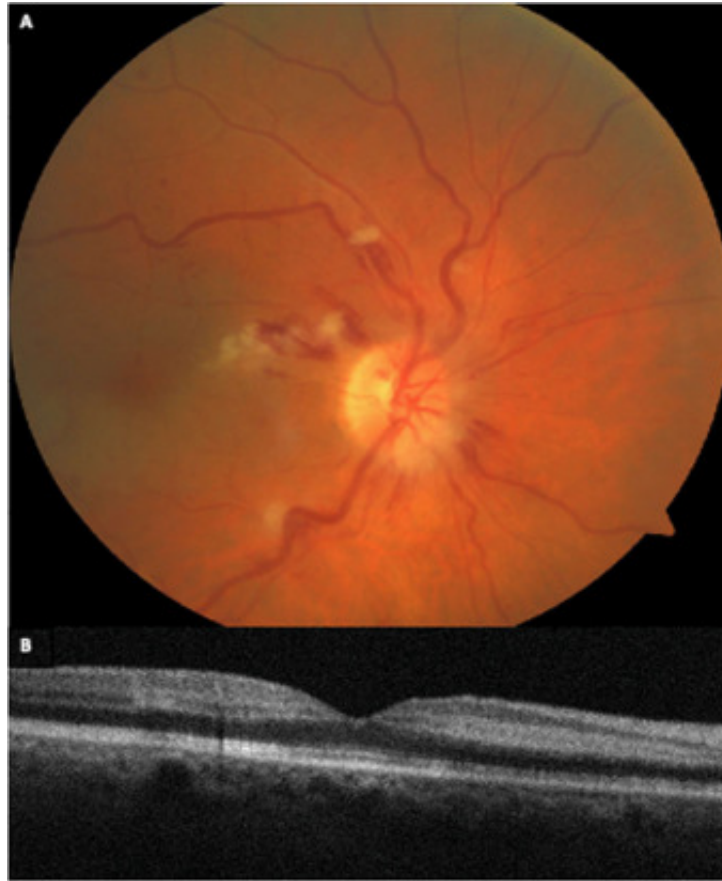


Cilioretinal artery occlusion secondary to central retinal vein occlusion



A 73-year-old male noticed decreased vision in right eye. He had no symptoms of giant cell arteritis. Vision was 20/40, and ophthalmoscopy revealed dilated and tortuous retinal veins with hemorrhages and central retinal whitening with cherry-red spot in the macula consistent with cilioretinal artery occlusion (CLRAO; Fig. 1A). Optical coherence tomography the macula showed inner retinal hyperreflectivity consistent with paracentral acute middle maculopathy (Fig. 1B).

Fig. 1(A) Right eye central retinal artery occlusion (optic nerve edema, peripapillary cottonwool spots, flame-shaped hemorrhages, and tortuous veins) and cilioretinal artery occlusion (ischemic macula with cherry-red spot). (B) Optical coherence tomography of the fovea reveals

hyperreflectivity in the ischemic inner retinal layers.