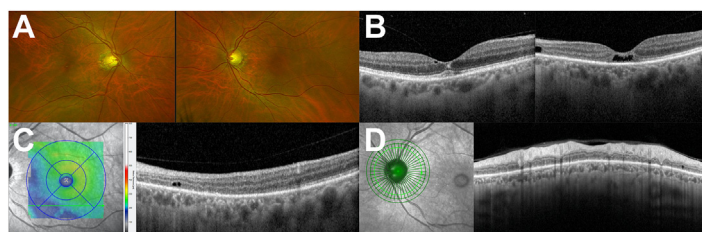


22. Chan TCY, Lam JKM, Jhanji V, Li EYM. Comparison of outcomes of primary anterior chamber versus secondary scleral-fixated intraocular lens implantation in complicated cataract surgeries. *Am J Ophthalmol.* 2015;159:221–226.e2.
23. Melamud A, Topilow JS, Cai L, He X. Pars plana vitrectomy combined with either secondary scleral-fixated or anterior chamber intraocular lens implantation. *Am J Ophthalmol.* 2016;168:177–182.
24. Kim KH, Kim WS. Comparison of clinical outcomes of iris fixation and scleral fixation as treatment for intraocular lens dislocation. *Am J Ophthalmol.* 2015;160:463–469.e1.
25. Ganekal S, Venkataratnam S, Dorairaj S, Jhanji V. Comparative evaluation of suture-assisted and fibrin glue-assisted scleral fixated intraocular lens implantation. *J Refract Surg.* 2012;28:249–252.
26. Haszcz D, Nowomiejska K, Oleszczuk A, et al. Visual outcomes of posterior chamber intraocular lens intrascleral fixation in the setting of postoperative and posttraumatic aphakia. *BMC Ophthalmol.* 2016;16:50.
27. Watane A, Botsford BW, Sood AB, et al. Scleral-sutured intraocular lens dislocations secondary to eyelet fractures. *Am J Ophthalmol.* 2021;221:273–278.
28. Bading G, Hillenkamp J, Sachs HG, et al. Long-term safety and functional outcome of combined pars plana vitrectomy and scleral-fixated sutured posterior chamber lens implantation. *Am J Ophthalmol.* 2007;144:371–377.e1.
29. Abbey AM, Hussain RM, Shah AR, et al. Sutureless scleral fixation of intraocular lenses: outcomes of two approaches. The 2014 Yasuo Tano Memorial Lecture. *Graefes Arch Clin Exp Ophthalmol.* 2015;253:1–5.
30. Marie-Louise J, Philippakis E, Darugar A, et al. Occurrence rate of retinal detachment after small gauge vitrectomy for idiopathic epiretinal membrane. *Eye (Lond).* 2017;31:1259–1265.
31. Holt DG, Young J, Stagg B, Ambati BK. Anterior chamber intraocular lens, sutured posterior chamber intraocular lens, or glued intraocular lens: where do we stand? *Curr Opin Ophthalmol.* 2012;23:62–67.
32. Kannan NB, Sen S, Mishra C, et al. Ten-year trends in the incidence, clinical profile and outcomes of acute-onset endophthalmitis following combined pars plana vitrectomy and sutureless, glueless and flapless scleral fixation of intraocular lenses. *Int Ophthalmol.* 2021;41:1651–1658.
33. Yalcinbayir O, Avci R, Ucan Gunduz G, et al. Comparison of two techniques in posterior lens dislocations: scleral suture fixation vs. modified Yamane intrascleral lens fixation. *J Fr Ophthalmol.* 2022;45:13–19.
34. Pakravan P, Patel V, Chau V, et al. Haptic erosion following sutureless scleral-fixated intraocular lens placement. *Ophthalmol Retina.* 2023;7:333–337.
35. Meyer LM, Philipp S, Fischer MT, et al. Incidence of cystoid macular edema following secondary posterior chamber intraocular lens implantation. *J Cataract Refract Surg.* 2015;41:1860–1866.
36. Todorich B, Stem MS, Kooragayala K, et al. Structural analysis and comprehensive surgical outcomes of the sutureless intrascleral fixation of secondary intraocular lenses in human eyes. *Retina.* 2018;38(Supplement 1):S31–S40.
37. Todorich B, Thanos A, Woodward MA, Wolfe JD. Sutureless intrascleral fixation of secondary intraocular lens using 27-gauge vitrectomy system. *Ophthalmic Surg Lasers Imaging Retina.* 2016;47:376–379.

## Pictures & Perspectives



### Electrical Shock Retinopathy

A 73-year-old man presented with progressively worsening vision in both eyes that began 2 weeks after electrical shock injury. Fundus examination showed a foveal hypopigmented spot in the right eye and an irregular foveal reflex in the left eye (A). Macular (B, C) and peripapillary (D) OCT demonstrated a right eye hyperreflective foveolar spot with a small parafoveal cyst and left eye partial-thickness foveal and nasal outer macular holes, outer retinal disorganization, ellipsoid zone disruption, and thinning in the peripapillary region. Electrical injury to the retina may cause partial- or full-thickness macular and retinal holes and outer and inner retinal atrophy. (Magnified version of Figure A–D is available at [www.ophtalmologyretina.org](http://www.ophtalmologyretina.org)).

RYAN P. NOLAN, MD, MBA

WILLIAM XU, BS

TAHIRA M. SCHOLLE, MD

Department of Ophthalmology, Baylor College of Medicine, Houston, Texas