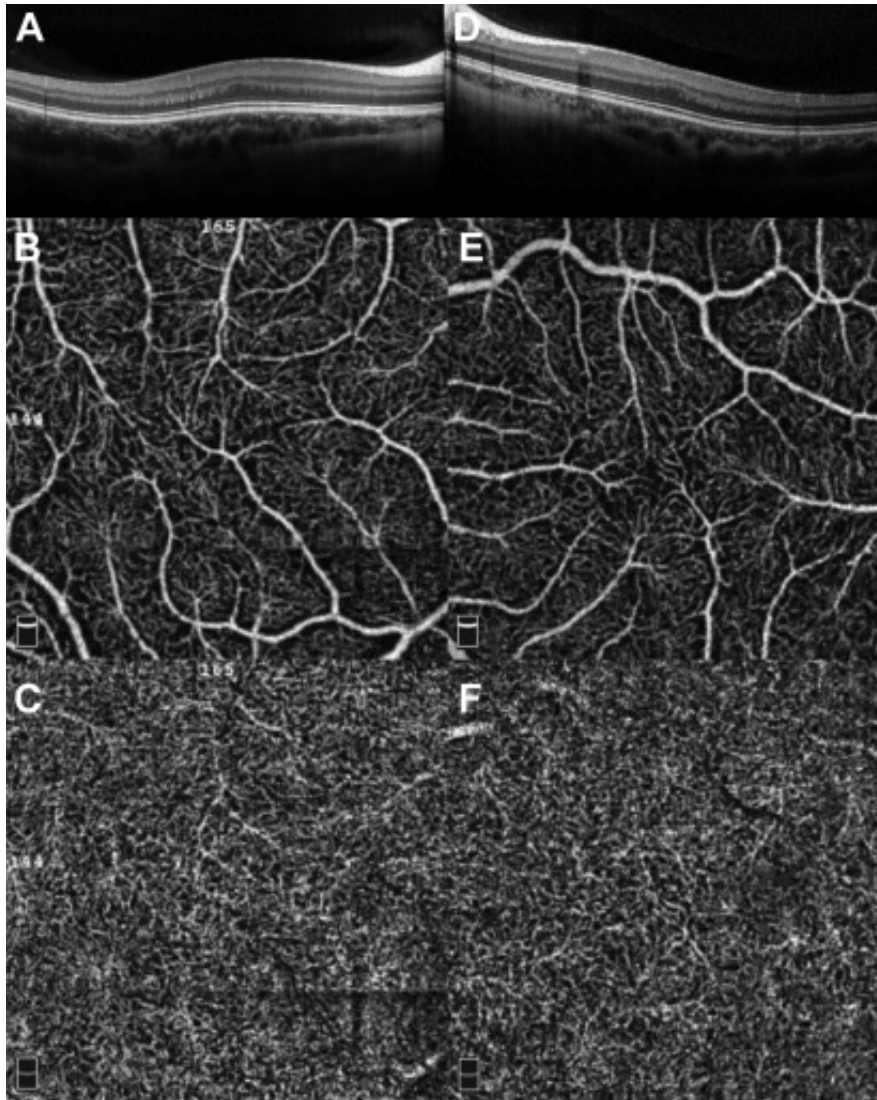


Multimodal Imaging of Idiopathic Fovea Plana



A 12-year-old full-term girl sought treatment after absent foveal reflexes were discovered on routine examination. She demonstrated normal pigmentation, intermittent exotropia, and mild hypermetropia in both eyes. Her best-corrected visual acuity was 20/25 in the right eye and 20/30 in the left eye. Anterior segment examination showed normal results in both eyes. OCT images (**A**, **D**) showed symmetrically absent foveal depressions. OCT angiography (3 × 3 mm; AngioVue [Optovue, Inc., Fremont, CA]) of the superficial capillary plexus (**B**, **E**) and deep capillary plexus (**C**, **F**) showed absent foveal avascular zones (FAZs). Idiopathic fovea plana is characterized by developmental absence of the FAZ in the superficial and deep capillary plexi, as demonstrated by OCT angiography.