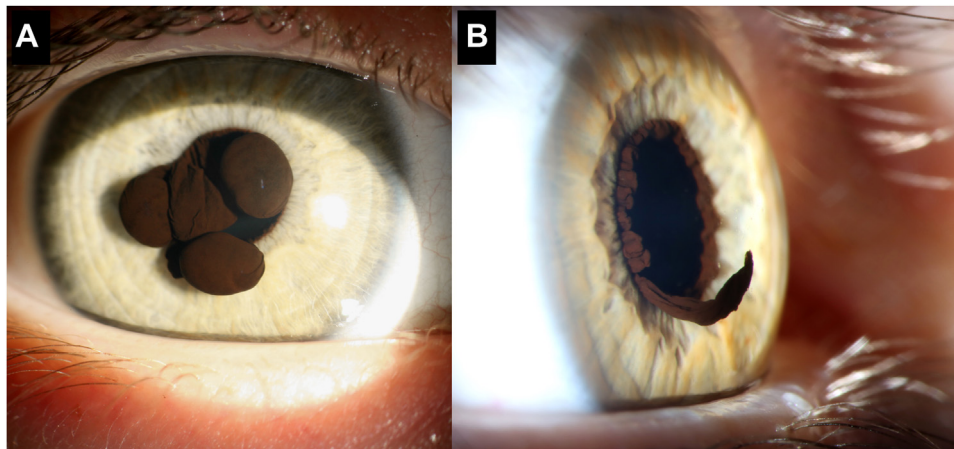


Pictures & Perspectives



Iris Flocculus

In 2009, a 5-year-old girl was examined for multiple pigmented cysts on the pupillary margin of her right eye (A), discovered alongside hyperpigmentation in her axillae (Blaschko's lines). Histopathology confirmed normal iris pigment epithelium. These cysts, potentially indicating familial thoracic aortic aneurysm and dissection, necessitated a radiological chest examination, which revealed no abnormalities. Later developments raised the suspicion of Goltz syndrome, although genetic testing showed no mutations in relevant genes, including *ACTA2* and *PORCN*. In 2023, the patient experienced a recurrence of a pupillary margin cyst. Fortunately, it had a thin stalk and collapsed spontaneously (B). (Magnified version of Figure A–B is available online at www.opthalmologyretina.org)

ROSA BRISSON, MD^{1,2}

GUSTAV STÅLHAMMAR, MD, PhD^{1,2}

¹St. Erik Eye Hospital, Stockholm, Sweden; ²Department of Clinical Neuroscience, Division of Eye and Vision, Karolinska Institutet, Stockholm, Sweden

Footnotes and Disclosures

Supported by Region Stockholm (FoUI-981345; G.S.) and the Swedish Cancer Society (23 2613 Fk; G.S.). The sponsors or funding organizations had no role in the design or conduct of this study.
