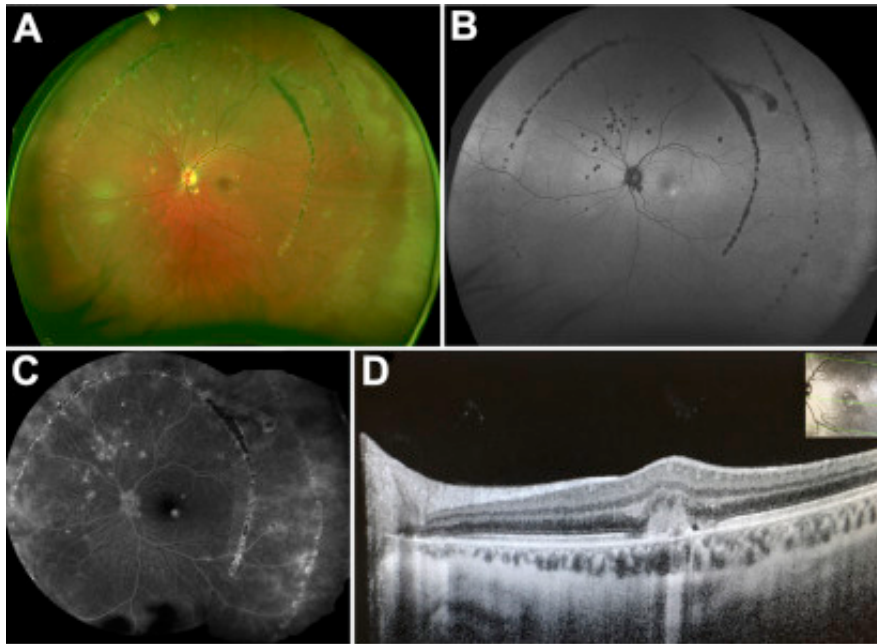


# Multimodal Imaging of Double Schlaegel Lines



A 25-year-old woman with myopia presented with left eye metamorphopsia. Vision was 20/20 in her right eye and 20/40 in her left eye. Fundus photography (**A**) showed multiple punched-out chorioretinal lesions, choroidal neovascularization (CNV), and 2 rows of peripheral curvilinear pigmented chorioretinal streaks (Schlaegel lines). Autofluorescence depicted hypoautofluorescent lesions and hyperautofluorescent CNV (**B**). Fluorescein angiography showed staining and leakage of lesions, optic disc leakage, and CNV hyperfluorescence (**C**). OCT showed type 2 CNV and trace vitreous cell (**D**). Punctate inner choroidopathy/multifocal choroiditis was suspected; however, a systemic workup was unrevealing and the CNV was treated with an anti-vascular endothelial growth factor injection.