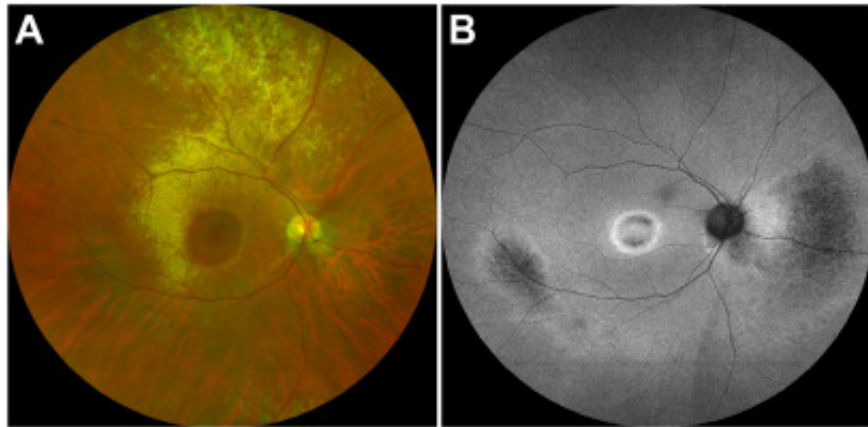


# RPGR-Associated Cone-Rod Degeneration and Tapetal-Like Reflex in a Male Patient



A 48-year-old man presented with a 4-year history of photophobia and dyschromatopsia. Best-corrected visual acuity was 20/50 bilaterally, and fundoscopy revealed a bilateral golden sheen (A), which had no translation on autofluorescence imaging. However, a parafoveal hyperautofluorescent ring could be seen (B). A diagnosis of cone-rod dystrophy was established, and genetic testing identified the *RPGR*-associated variant: c.2426\_2427del p.(Glu809Glyfs\*25) in hemizyosity. Tapetal-like reflex is a golden-like retinal reflectivity postulated to result from increased retinal extracellular potassium levels. It has been extensively described in female carriers of *RPGR*-associated disease. However, to our knowledge, this is the first report of tapetal-like reflex in a male patient with genetically-confirmed *RPGR*-associated cone-rod dystrophy. (Magnified version of Figure A-B is available online at [www.opthalmologyretina.org](http://www.opthalmologyretina.org)).