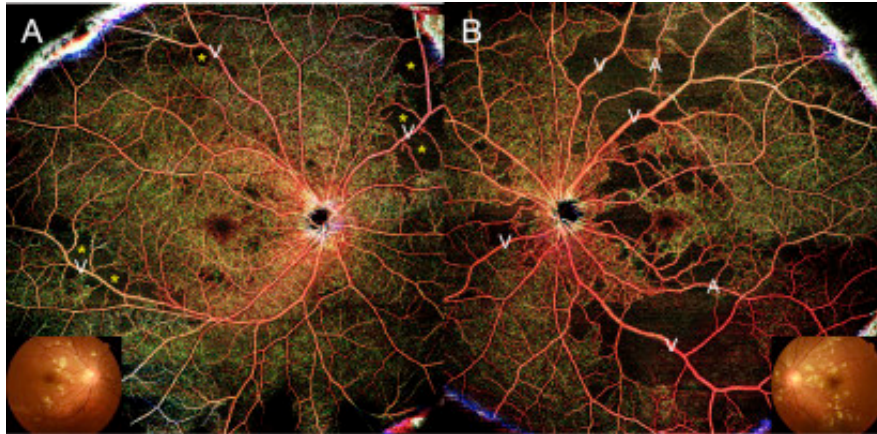


Purtscher-like Retinopathy Associated with Systemic Lupus Erythematosus Observed Using Wide-field OCT Angiography



A 19-year-old woman with a history of systemic lupus erythematosus presented with c impairment in both eyes (20/22 in the right eye and 20/100 in the left eye). Fundus photographs revealed multiple cotton wool spots indicating Purtscher-like retinopathy (**A**, **B**; inset). Wide-field OCT angiography demonstrated an area of capillary nonperfusion beginning around the retinal veins (V) (yellow asterisks) in the right eye and enlarged nonperfusion extending toward the retinal arteries (**A**) in the left eye (**A**, **B**). Thus, wide-field OCT angiography enables noninvasive evaluation of the severity of ischemia in patients with systemic lupus erythematosus.

Article info

Copyright

© 2018 by the American Academy of Ophthalmology