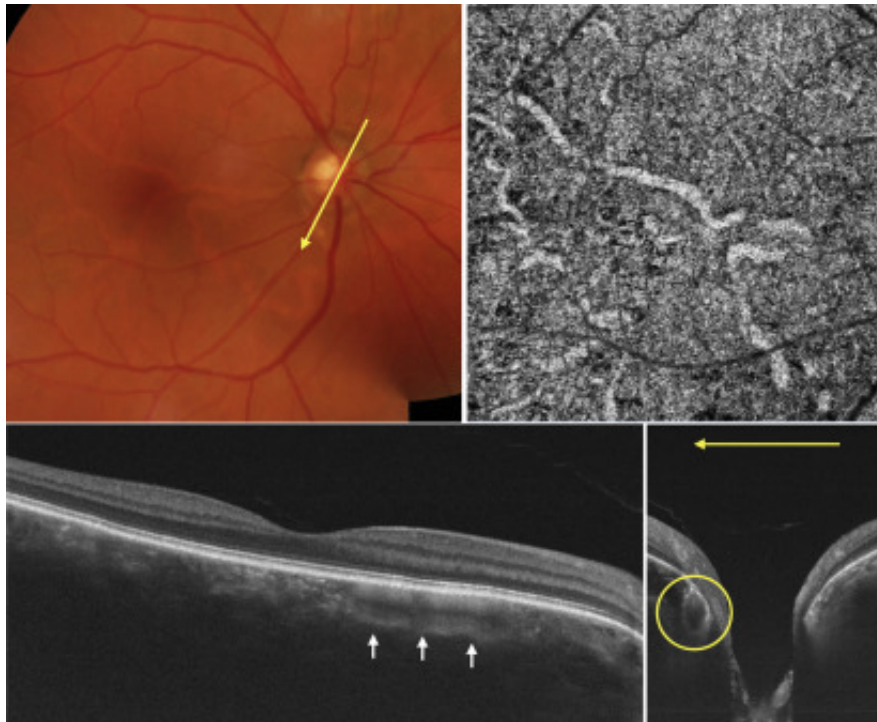


# Choroidal Vascular Finding in Sturge–Weber Syndrome



A 53-year-old woman with type 2 Sturge–Weber syndrome had choroidal thickening without choroidal hemangioma in the right eye. Color photograph showed tortuous, large choroidal vessels adjacent to the disc and elsewhere. OCT angiography confirmed the presence of large vessels with flow signal in the choriocapillaris slab. OCT showed vessels with a thick vessel wall just beneath the retinal pigment epithelium Bruch's complex at its entry (**yellow circle**) and course (**white arrows**), which is unusual. In normal eyes, larger choroidal vessels are localized to the outer choroid. This case highlights the presence of anomalous large choroidal vessels in Sturge–Weber syndrome.

## Article info

## Copyright

© 2021 by the American Academy of Ophthalmology