

Bilateral curvilinear chorioretinal streaks

Search for articles by this author

A 46-year-old Caucasian woman presented with distorted vision in both eyes. Visual acuity was 20/25 OD and 20/50 OS. Fundus examination showed bilateral concentric chorioretinal streaks (Fig. A, B), which were hyperfluorescent on fluorescein angiography (Fig. C, D). The scars had formed in a curvilinear pattern called Schlaegel lines associated with multifocal choroiditis and panuveitis (MCP). She developed choroidal neovascularization (CNV) and was treated with photodynamic therapy. Her visual distortions resolved and vision improved to 20/20 OD and 20/25 OS.

MCP may result in significant vision loss from CNV. Prompt recognition of Schlaegel lines is important to prevent further complications.

Disclosure

The authors have no proprietary or commercial interest in any materials discussed in this article.

Appendix. Supplementary materials

Article info

Publication history

Published online: June 23, 2020

Accepted: May 12, 2020

Received in revised form: April 24, 2020

Received: March 18, 2020

Identification

DOI: <https://doi.org/10.1016/j.jcjo.2020.05.007>

Copyright

ScienceDirect

[Access this article on ScienceDirect](#)

Figures

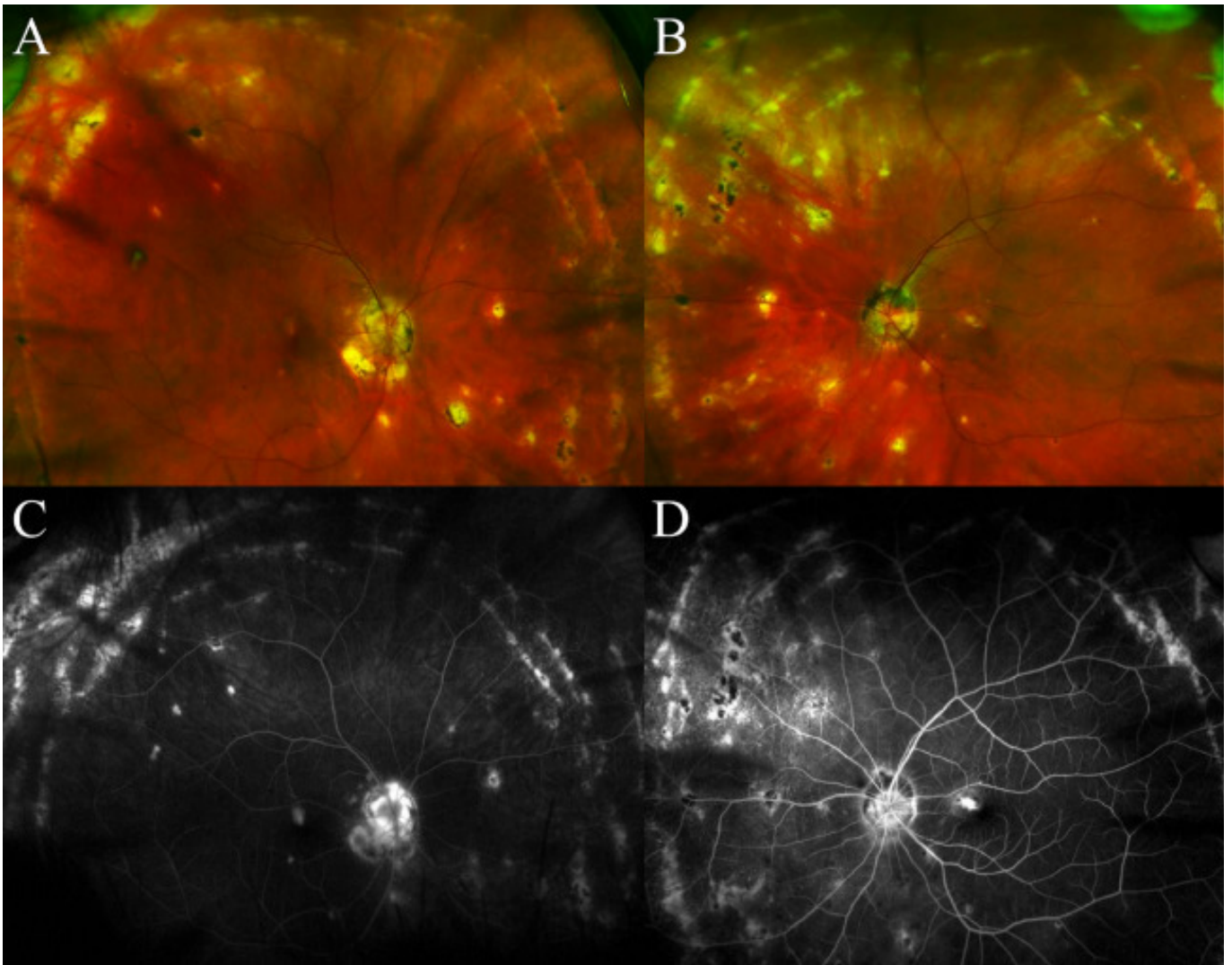


Fig. 1A-B: Ultra-widefield fundus photographs of both eyes demonstrating concentric chorioretinal streaks. C-D: Fluorescein angiography of both eyes further highlighting the Schlaegel lines.

Related Articles

