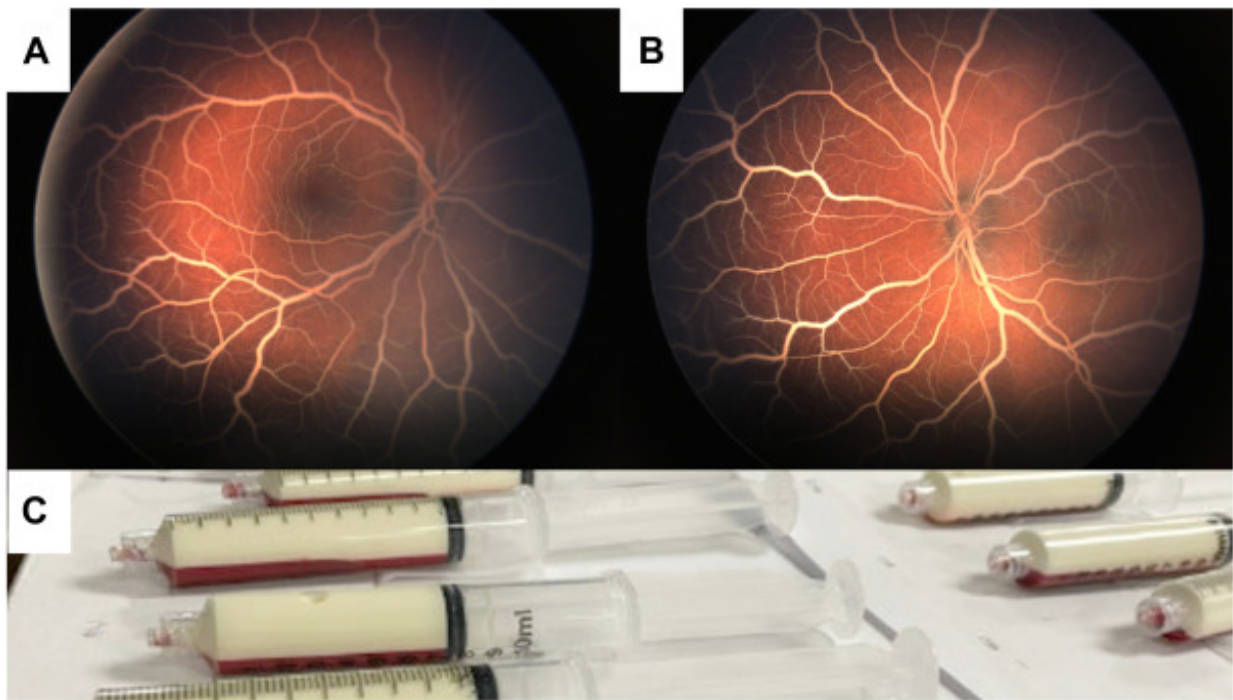


Severe Lipemia Retinalis in an Infant with Autosomal Recessive Lipoprotein Lipase Deficiency



A 40-day-old female infant presented with 2 weeks of poor feeding, melena, and rectal bleeding. Examination revealed bilateral severe lipemia retinalis, characterized by bright white retinal vessels over a “salmon-colored” fundus (**A**, **B**).

Triglyceride levels were extremely elevated (437.05 mmol, reference range ≤ 1.12 mmol). Genetic testing confirmed an autosomal recessive mutation causing lipoprotein lipase deficiency (**C**). The retinal appearance is the result of extremely high circulating serum chylomicrons levels. This case highlights a rare cause of genetic hyperlipidemia with dramatic fundus manifestations but typically without afferent visual dysfunction.

(Magnified version of Figure **A-C** is available online at www.aaojournal.org).

Article info

Publication history

Published online: November 21, 2023

Accepted: October 23, 2023

Received: October 17, 2023

Publication stage

In Press Journal Pre-Proof

Identification

DOI: <https://doi.org/10.1016/j.opthta.2023.10.025>

Copyright

© 2023 by the American Academy of Ophthalmology

ScienceDirect

[Access this article on ScienceDirect](#)