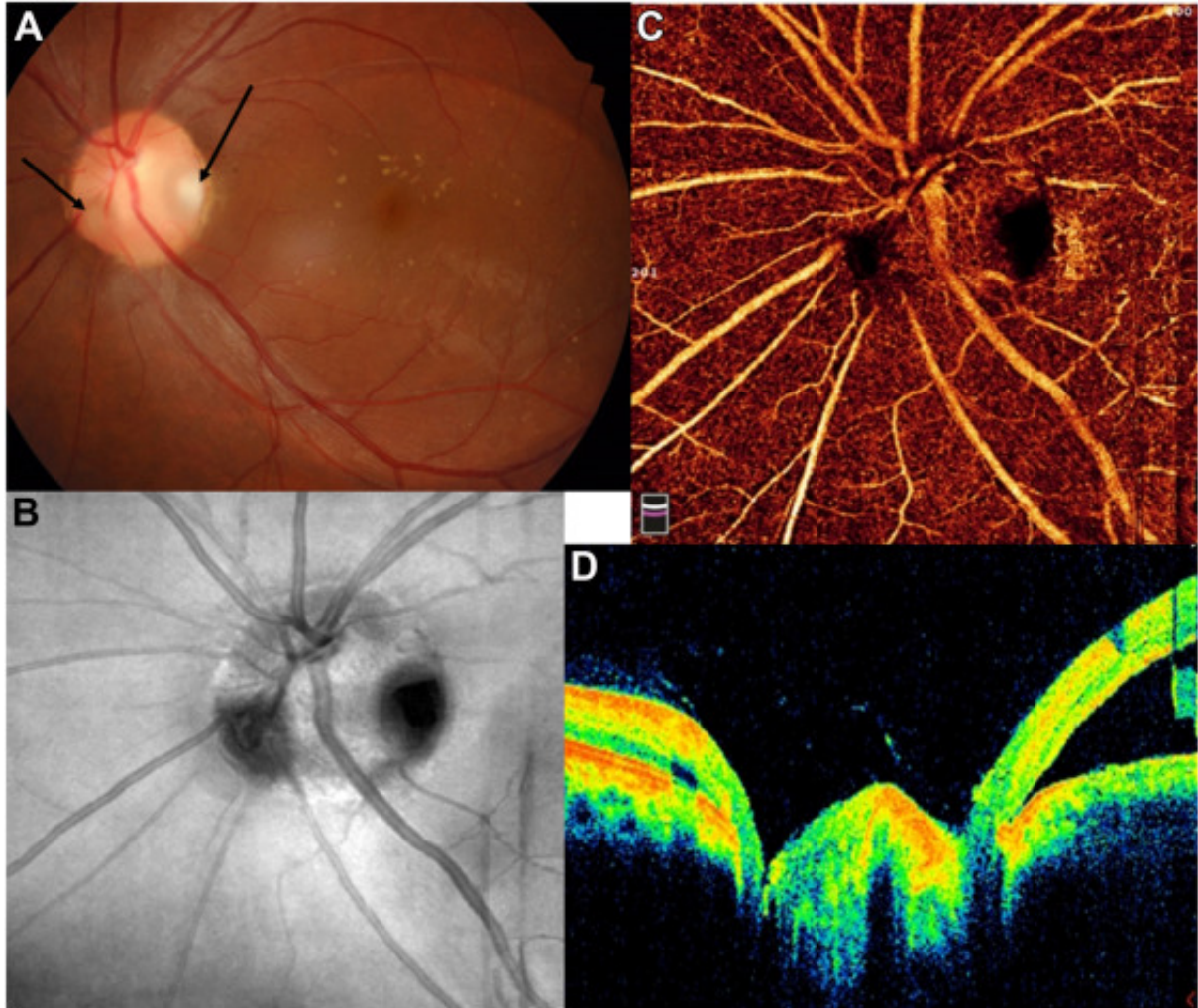


# Unilateral Double Optic Nerve Head Pits with Serous Macular Detachment



A 29-year-old man with vision of 20/200 in the left eye had 2 distinct, oval optic disc pits (arrow); 1 at the inferonasal segment and the other at the inferotemporal segment of the disc, with serous macular detachment (A). Confocal scanning laser ophthalmoscope image of the optic disc (B) and *en face* OCT angiography (AngioVue; Optovue) image (C) confirmed and clearly defined the pits. Corresponding OCT B-scan (D) showed intraretinal schisis and serous macular detachment, communicating with the inferotemporal pit. (Magnified version of Figure A-D is available online at [www.opthalmologyretina.org](http://www.opthalmologyretina.org)).

## Article info

## **Publication history**

Published online: April 15, 2023

## **Copyright**

© 2023 by the American Academy of Ophthalmology