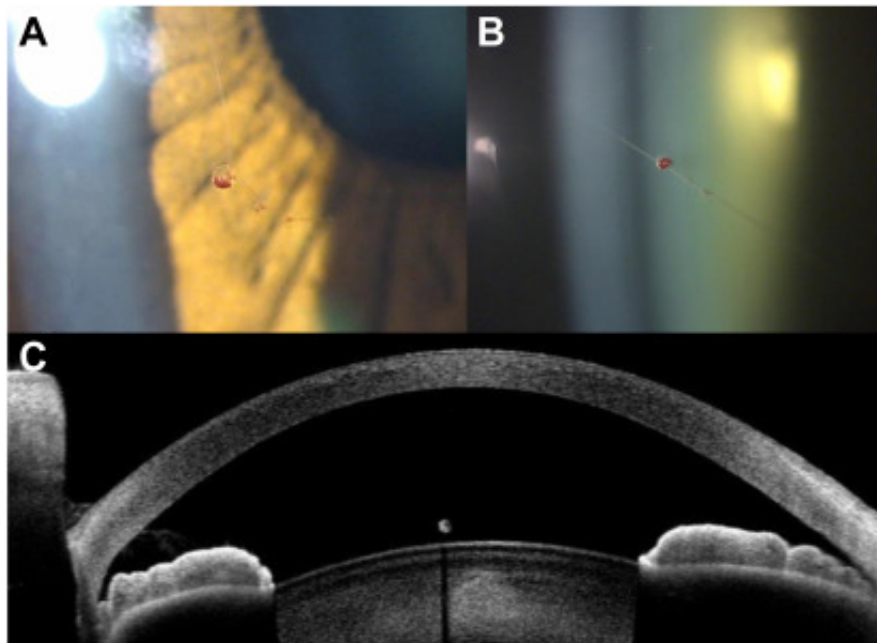


Vascular Aneurysm in Persistent Pupillary Membrane



A 56-year-old woman with a catheter-related bloodstream infection complaining of floaters was referred for fundus examination to rule out endophthalmitis. **A**, On examination, no abnormality was detected, except for persistent pupillary membrane in the anterior chamber of her left eye, with vessels entering and forming an aneurysm. Numerous erythrocytes with blood flow were confirmed in the vessels. **B**, After mydriasis, persistent pupillary membrane was tightened and fixed in the center of the lens. **C**, Anterior-segment OCT revealed a highly reflective structure consistent with the aneurysm, that remained after antibiotic treatment. (Magnified version of Figure **A-C** is available online at www.aaojournal.org).

Article info

Publication history

Published online: March 23, 2024

Accepted: January 11, 2024

Received in revised form: January 10, 2024

Received: January 5, 2024

Publication stage

In Press Journal Pre-Proof

Identification

DOI: <https://doi.org/10.1016/j.opthta.2024.01.019>

Copyright

© 2024 by the American Academy of Ophthalmology

ScienceDirect

[Access this article on ScienceDirect](#)

[View Abstract](#)