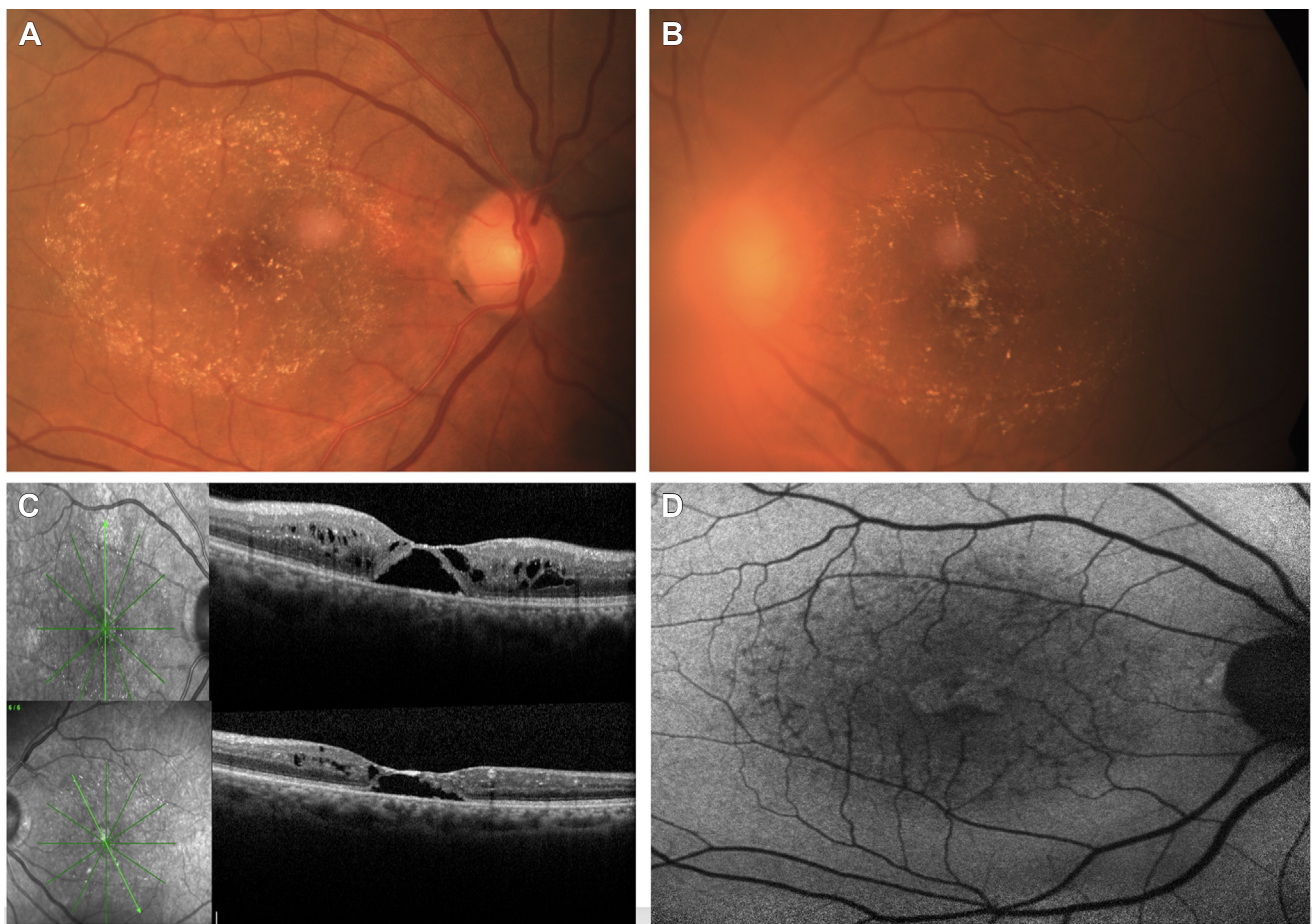


## Pictures & Perspectives



### Severe Tamoxifen Retinopathy

A 60-year-old woman presented with progressive diminution of vision in both eyes to 20/120. She carried a diagnosis of retroperitoneal and chest wall tumor and was on tamoxifen 80 mg once daily for 10 years. Bilateral, symmetric crystalline deposits were present at the macula (A, B). OCT showed outer retinal loss with foveal cavitation, cysts, and refractile crystals at the outer plexiform layer in both eyes (C). The crystals were hypo-autofluorescent, and the areas of cavitation were pseudo hyper-autofluorescent because of an unmasking effect from loss of the outer retina (D). Tamoxifen was stopped after discussion with the oncologist, and the unfavorable prognosis was explained. Because tamoxifen retinopathy is irreversible, patients should be screened annually for ocular toxicity. (Magnified version of Figure A-D is available online at [www.ophtalmologyretina.org](http://www.ophtalmologyretina.org)).

SOMYA KUMARI, MD  
BAIJU VIRANI, MBBS  
ROHAN CHAWLA, MS

*Department of Ophthalmology, Dr Rajendra Prasad Centre for Ophthalmic Sciences, All India Institute of Medical Sciences, New Delhi, India*