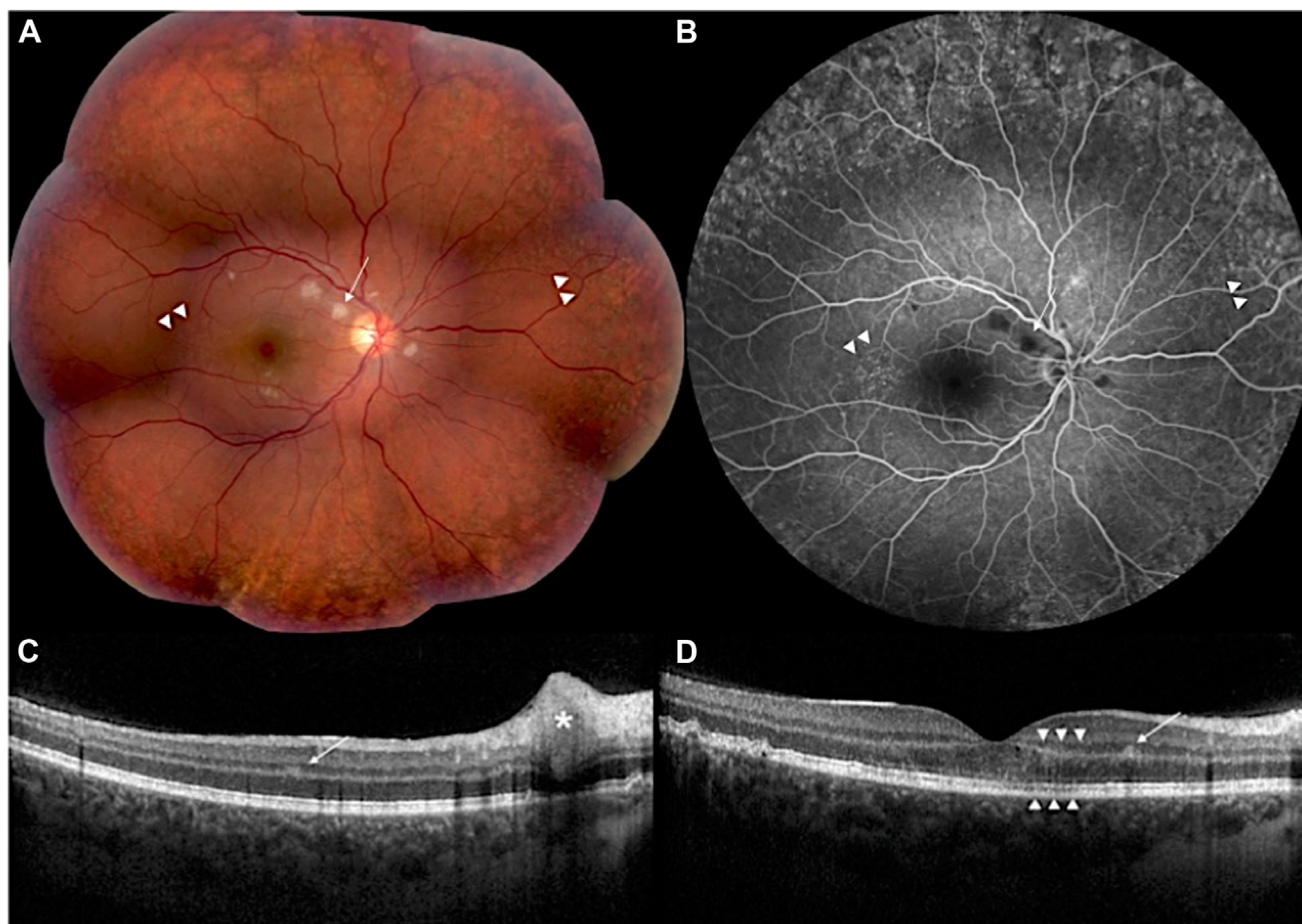


## Pictures & Perspectives



### Multimodal Imaging of Coronavirus Disease 2019-Associated Retinal Ischemia in a Patient with Dense Deposit Disease

A 30-year-old woman with advanced kidney disease secondary to dense deposit disease experienced bilateral scotomata days after coronavirus disease 2019 diagnosis with mild symptoms. Cotton wool spots (A, B, arrows) and drusen with pigment mottling (A, B, arrowheads) were seen. OCT revealed ischemia affecting multiple retinal levels, with hyperreflectivity of the nerve fiber layer (C, star), inner nuclear layer (C, D, arrows), and outer plexiform/nuclear layer with ellipsoid disruption (D, arrowheads). Patients with preexisting complement abnormalities may be sensitive to additional complement activation from even mild infections, leading to retinal ischemia. (Magnified version of Figure A-D is available online at [www.opthalmologyretina.org](http://www.opthalmologyretina.org)).

IVY ZHU, MD

LEE M. JAMPOL, MD

Department of Ophthalmology, Northwestern University, Chicago, Illinois