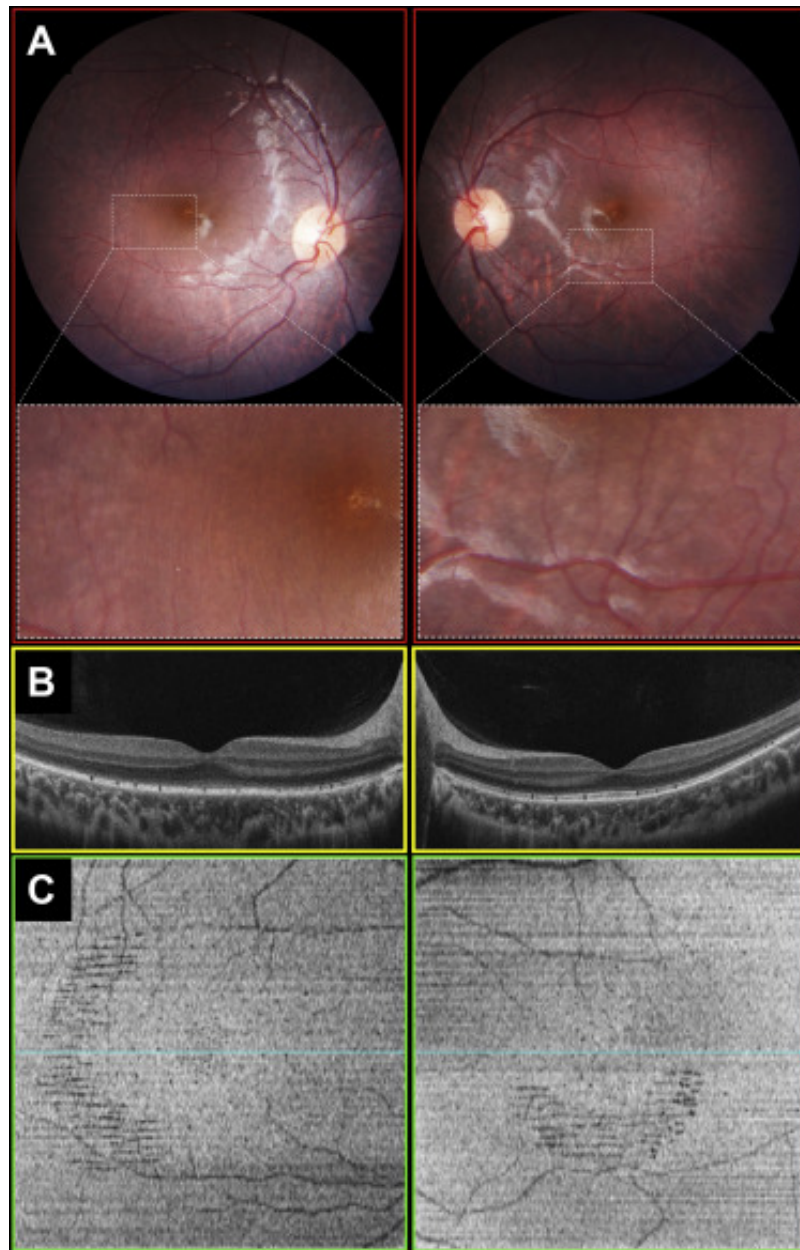


# Dark Dots in Retinitis Punctata Albescens



A 4-year-old boy was diagnosed with retinitis punctata albescens associated with compound heterozygous mutations in the *RLBP1* gene. Funduscopy examination showed white dot-like deposits in the midperiphery. Full-field electroretinography revealed decreased A- and B-wave amplitudes for rods and cones and nonrecordable bright-flash mixed rod-cone electroretinography. Color fundus photography showed discrete hypopigmented dots (**A**). Spectral-domain OCT demonstrated focal nonreflective disruptions of the ellipsoid zone (**B**). En face ellipsoid OCT disclosed scattered hyporeflective dots that were more prominent

temporally in the right eye and inferiorly in the left eye (C). En face imaging may highlight several patterns of ellipsoid zone contraction in different meridians in retinitis punctata albescens.