

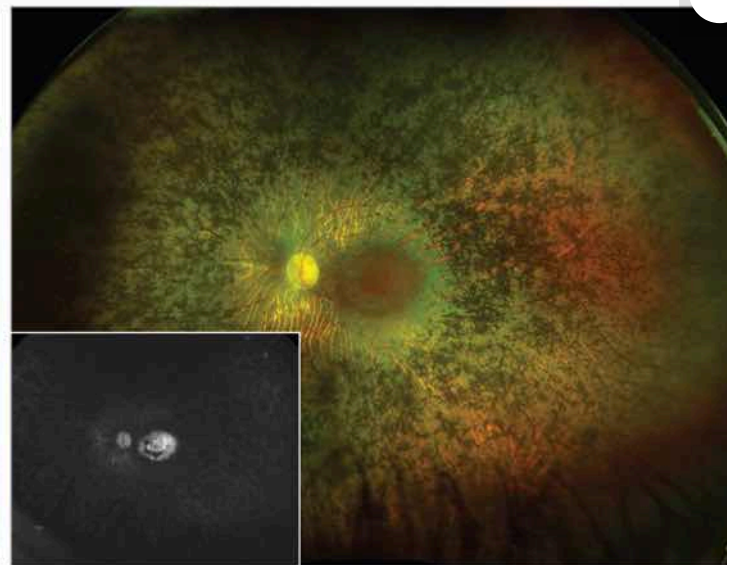
# Simultaneous Pigmented Paravenous Retinochoroidal Atrophy and Retinitis Pigmentosa in the Contralateral Eye

Daniel Gomez Plaza, MD1; Anniken Bures Jelstrup, MD1;  
Rafael Navarro, MD1

Fundus photography, paravenous retinochoroidal atrophy



**B** Fundus photography, retinitis pigmentosa



A 59-year-old woman was referred to our clinic. Her parents were consanguineous (first cousins). In 2013, her best-corrected visual acuity (BCVA) was 20/25 OD and 20/40 OS. Fundus examination showed well-demarcated areas of pigmented retinochoroidal atrophy along the vascular arcades with normal optic disc in the right eye, consistent with pigmented paravenous retinochoroidal atrophy (PPRCA) (Figure, A). In the left eye, fundus examination showed diffuse bony spicules, disc pallor, and attenuated arterioles suggestive of retinitis pigmentosa (RP) (Figure, B). After 10 years, BCVA was 20/30 in OD and 20/400 OS, which correspond with the expected evolution of each separated disease.<sup>1</sup>

