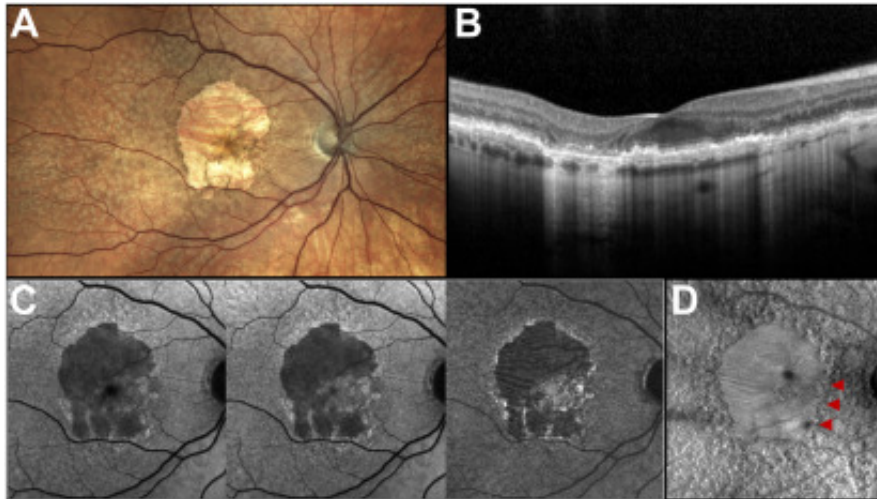


Multimodal Imaging of Extensive Macular Atrophy with Pseudodrusen-like Appearance



We imaged a 54-year-old White woman affected by extensive macular atrophy with pseudodrusen-like appearance. Fundus photograph showed an oval-shaped area of macular atrophy with partial foveal involvement, surrounded by several pseudodrusen (**A**). A diffuse separation with material deposition between the retinal pigment epithelium (RPE) and Bruch's membrane was visible on OCT (**B**), whereas the borders of atrophy were better visualized using near-infrared autofluorescence among the 3 techniques utilized (**C**). The retromode image demonstrated irregularities of the RPE corresponding to the pseudodrusen-like lesions and unveiled some RPE atrophic changes extending to the apparently unaffected area nasal to the fovea (**D**). (Magnified version of Figure **A-D** is available online at www.opthalmologyretina.org/).