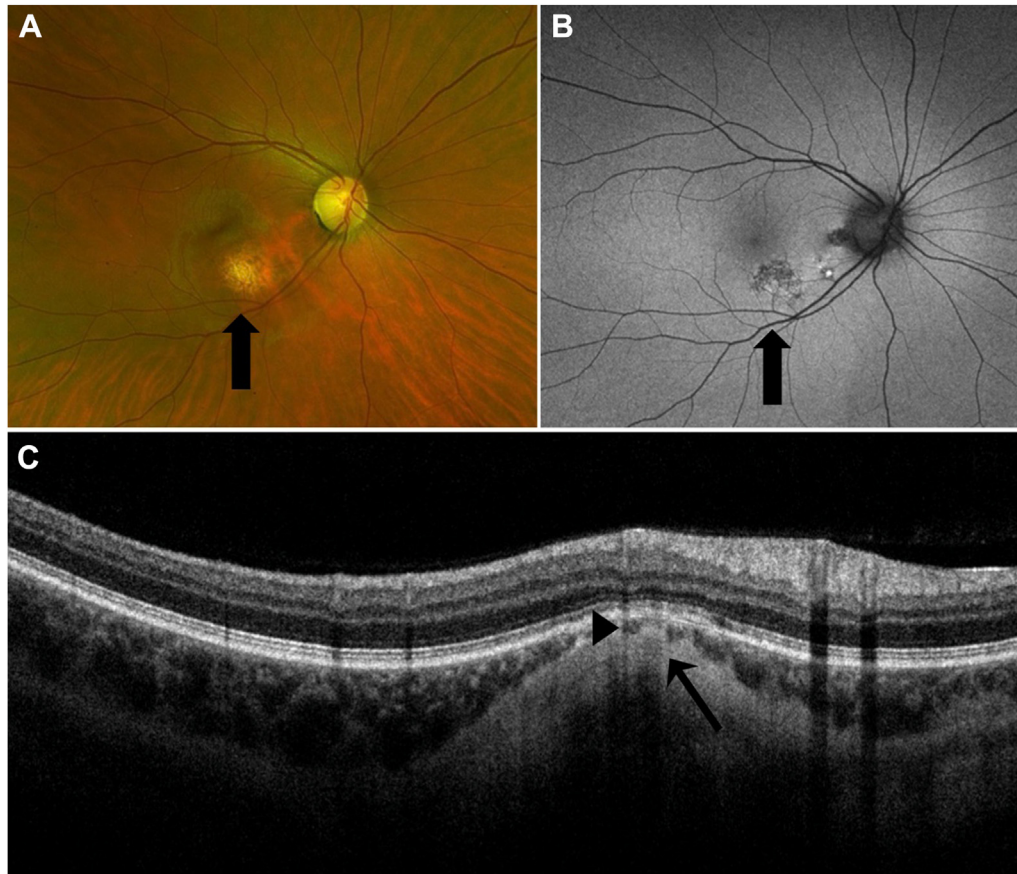


Pictures & Perspectives



Focal Scleral Nodule

A 32-year-old woman presented to the emergency department with a severe reaction to eyelash extensions. On ophthalmic examination, vision was 20/20. Slit-lamp examination of the posterior segment revealed an incidental finding of a yellow-white, elevated, round lesion inferior to the macula (A, arrow). Fundus autofluorescence imaging showed an area of speckled hypo-autofluorescence (B, arrow). OCT demonstrated that the lesion was confined to the sclera (C, arrow), with thinning of the overlying choroid (C, arrowhead). A diagnosis of focal scleral nodule was made. Focal scleral nodules are rare, benign amelanotic lesions of the posterior segment. At follow-up, the patient required no treatment. (Magnified version of Figure A-C is available online at www.aaojournal.org).

ANNABELLE BAKER, MD

THOMAS CAMPBELL, MBBS, DPHIL

Sunshine Coast University Hospital, Queensland, Australia