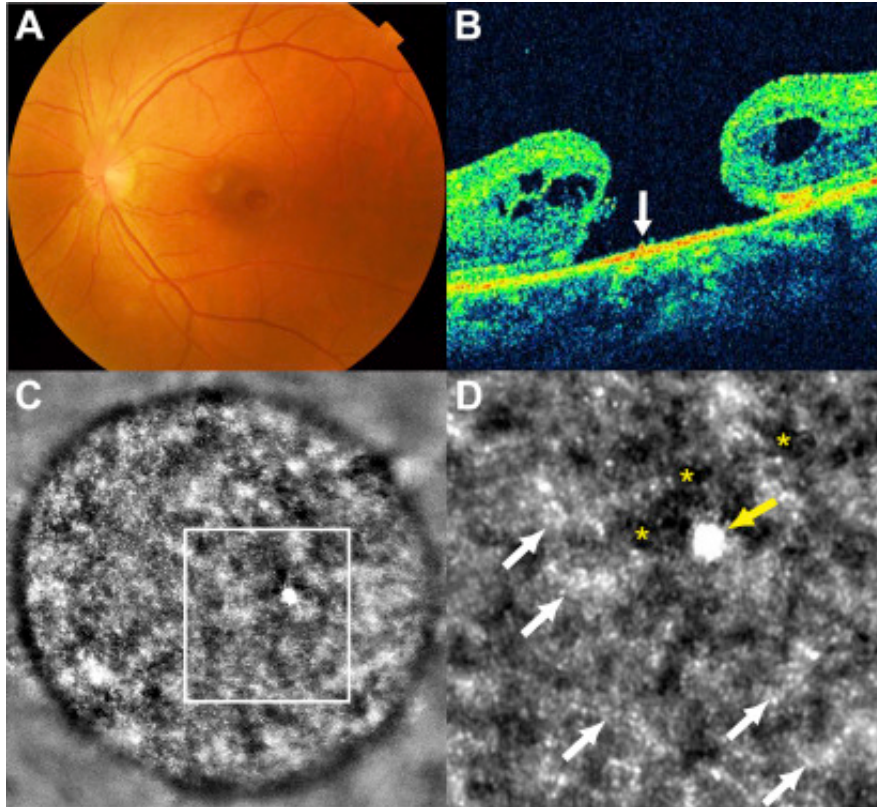


Remnants of Photoreceptor Outer Segments at the Base of the Macular Hole



A 67-year-old woman presented with a full-thickness macular hole in the left eye (A, B). Her visual acuity in the left eye was 20/200. The OCT image showed hyper-reflective deposits on the retinal pigment epithelium (RPE; B, arrow). Adaptive optics imaging of the hole base showed not only the RPE (asterisks) but also photoreceptor outer segments on the RPE (white arrows) and a white area suggestive of aggregation of outer segments (C, D, yellow arrow). This image highlights the presence of remnants of the photoreceptor outer segments on the RPE during pathogenesis of the hole.

Article info

Copyright

