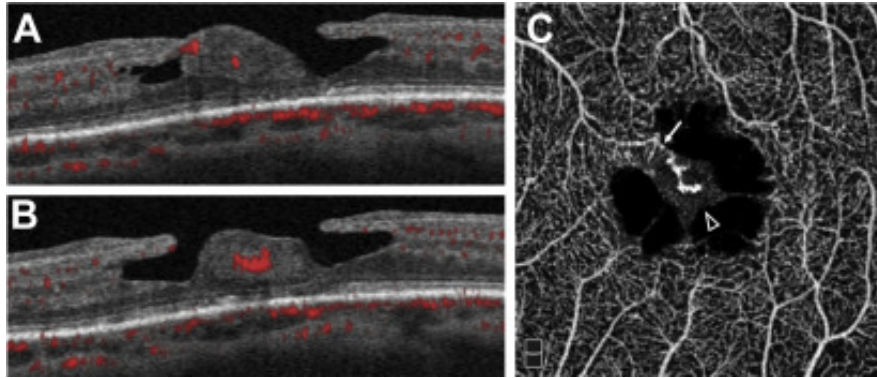


Vascularized Epiretinal Proliferation Associated with Lamellar Macular Hole



A 79-year-old woman with no significant medical history sought treatment for a lamellar macular hole in the left eye and underwent OCT angiography examination (Optovue, Fremont, CA). The B-scans showed a flow signal within the foveal bump (**A**, **B**). The en face image revealed a new vessel originating from the superficial capillary plexus and running through a bridge (arrow) toward an epiretinal proliferation in the foveal center (arrowhead) (**C**). During the 3-year follow-up, no functional or anatomic changes occurred. It is possible that the epiretinal proliferation has a vascular component in addition to the glial component as part of the reactive proliferative process.

Article info

Copyright

© 2021 by the American Academy of Ophthalmology