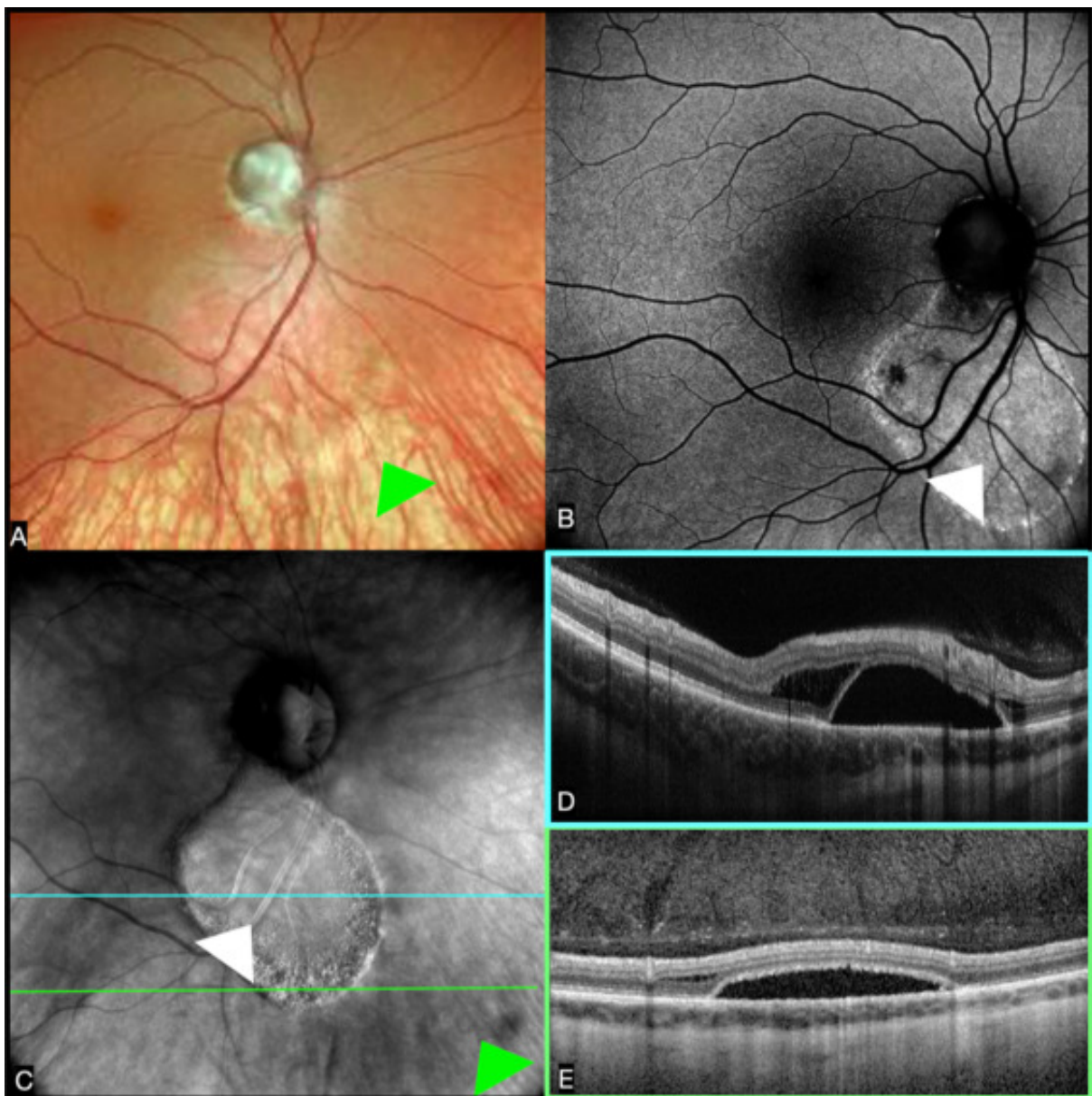


Retro-mode imaging of gravitational subretinal fluid associated with optic disc pit maculopathy with extensive retinal schisis in a young myopic patient



A 32-year-old female with high myopia and optic disc pit

maculopathy associated with schisis was imaged on the Mirante confocal scanning laser ophthalmoscope (Nidek Co, Ltd, Gamagori, Japan). Scanning laser ophthalmoscope colour fundus photography (**A**) shows a hypopigmented area corresponding with the schisis (green arrows), whereas the blue-light fundus autofluorescence (**B**) highlights an oval hyperautofluorescent area consistent with the subretinal fluid (SRF; white arrow), which is a useful landmark to monitor the extension and localization of the fluid during the course of follow-up. Retro-mode illumination (**C**) demonstrates enhanced visualization of the margin of the SRF (white arrow). The myopic schisis is highlighted on retro-mode illumination (green arrows) as fine radiating lines. Optical coherence tomography demonstrates the schisis associated with subretinal fluid (**D**). Panel **E** illustrates more subtle, smaller areas of schisis adjacent to the SRF.