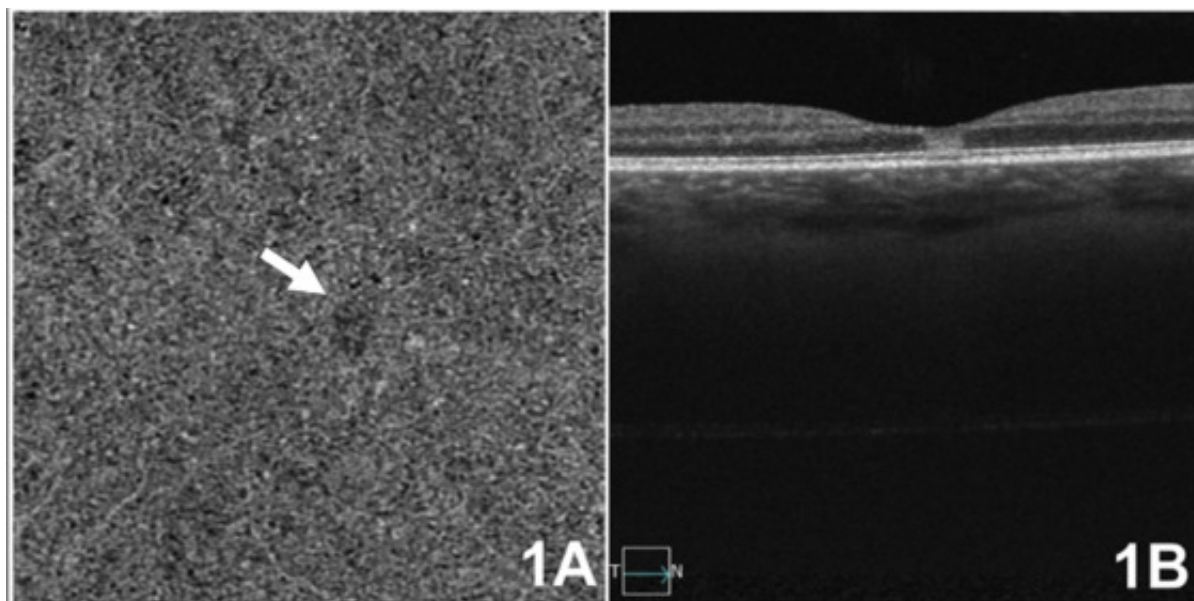


Optical coherence tomography angiography findings and follow-up in acute solar retinopathy



A 31-year-old female presented to the emergency room with bilateral blurred vision after prolonged sun gazing lasting 30 minutes during meditation exercises 20 hours prior to presentation. Her best-corrected visual acuity was 20/20 in both eyes with central scotoma in both eyes. Evaluation with swept-source optical coherence tomography (OCT) and angiography PLEX Elite 9000 (Zeiss Medical Technology, Jena, Germany) using a 3 × 3 mm scan pattern centred on the fovea was performed. OCT A-scan of the right eye showed a focal inner choroidal flow deficit (Fig. 1A, white arrow). OCT B-scan of the right eye showed the angular sign of Henle fibre layer hyperreflectivity (ASHH; Fig. 1B).

Fig. 1A. Right eye OCT A showing focal inner choroidal flow deficit. 1B. Right eye OCT scan

showing the angular sign of Henle fiber layer hyperreflectivity.