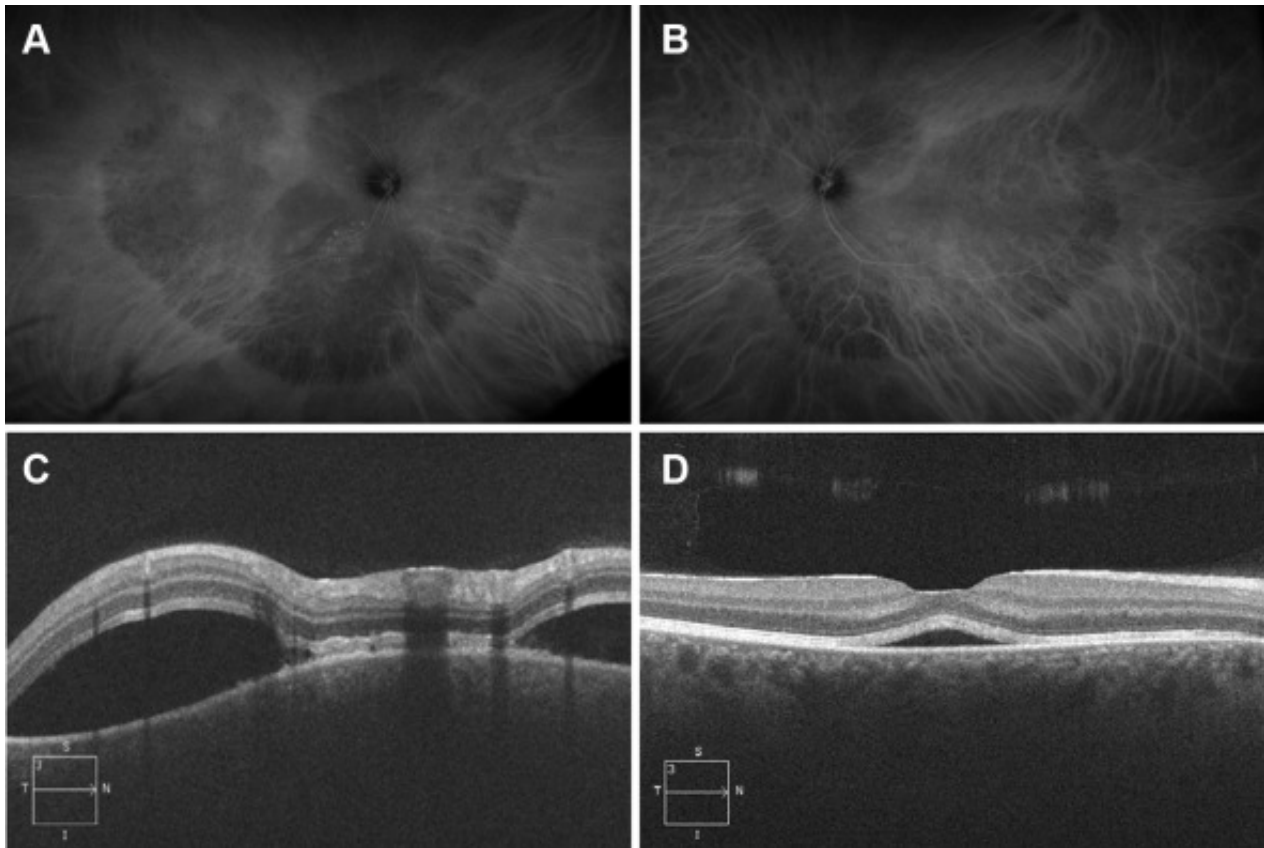


Infiltrative Chorioretinopathy in Recurrent Acute Monocytic Leukemia



A 23-year-old man with recurrent acute monocytic leukemia presented with blurred vision and a dark spot in his right upper visual field. Visual acuity was 20/30 in his right eye and 20/20 in his left eye. Indocyanine green angiography demonstrated hypofluorescence/blockage in the macula and peripapillary area bilaterally, indicative of choroidal leukemic infiltrates **(A, B)**. OCT revealed serous detachment in the right eye, with thickened and bumpy choroid **(C)**. A week after resuming chemotherapy, his visual acuity was 20/20 in both eyes, with a significant reduction of subretinal fluid and choroidal thickness on OCT in the right eye **(D)**.

Article info

Copyright

