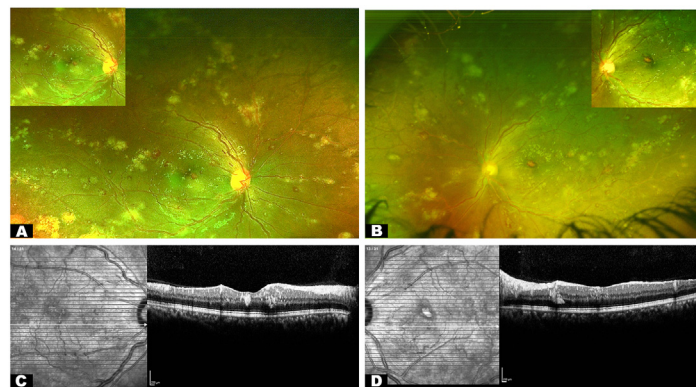


33. Nicholson L, Vazquez-Alfageme C, Ramu J, et al. Validation of concentric rings method as a topographic measure of retinal nonperfusion in ultra-widefield fluorescein angiography. *Am J Ophthalmol*. 2015;160:1217–1225.e2.
34. Silva PS, Cavallerano JD, Haddad NM, et al. Peripheral lesions identified on ultrawide field imaging predict increased risk of diabetic retinopathy progression over 4 years. *Ophthalmology*. 2015;122:949–956.
35. Mansour AM, Schachat A, Bodiford G, Haymond R. Foveal avascular zone in diabetes mellitus. *Retina*. 1993;13:125–128.
36. Sim DA, Keane PA, Rajendram R, et al. Patterns of peripheral retinal and central macula ischemia in diabetic retinopathy as evaluated by ultra-widefield fluorescein angiography. *Am J Ophthalmol*. 2014;158:144–153.e1.
37. Or C, Das R, Despotovic I, et al. Combined Multimodal Analysis of Peripheral Retinal and Macular Circulation in Diabetic Retinopathy (COPRA study). *Ophthalmol Retina*. Jul 2019;3:580–588.
38. Lynch G, Romo JSA, Linderman R, et al. Within-subject assessment of foveal avascular zone enlargement in different stages of diabetic retinopathy using en face OCT reflectance and OCT angiography. *Biomed Opt Express*. 2018;9:5982–5996.
39. Lei J, Durbin MK, Shi Y, et al. Repeatability and reproducibility of superficial macular retinal vessel density measurements using optical coherence tomography angiography en face images. *JAMA Ophthalmol*. 2017;135:1092–1098.

Pictures & Perspectives



Retinal Leukemic Infiltrates

A 29-year-old man, previously diagnosed with chronic myeloid leukemia, who had discontinued his medications for the past 6 months, presented with blurring of vision for 2 weeks. Ultraslice fundus imaging (A–D) shows dilated and tortuous vessels, Roth spots, and widespread yellowish-white nodular lesions in the retina, predominantly paravascular in distribution, suggestive of leukemic infiltrates. On OCT, these leukemic infiltrates appear hyperreflective, involving the inner retinal layers. Retinal leukemic infiltrates are rare (3% of cases), usually seen before the initiation of treatment or in those with blast crisis. Our patient was advised to consult a hematologist to reinstate treatment (Magnified version of Figure A–D is available online at www.opthalmologyretina.org).

MANAVI D. SINDAL, MS
 BHOLESH RATNA, MS
 SHIVRAJ TAGARE, DNB

Vitreoretinal services, Aravind Eye Hospital and Postgraduate Institute of Ophthalmology, Pondicherry, India
