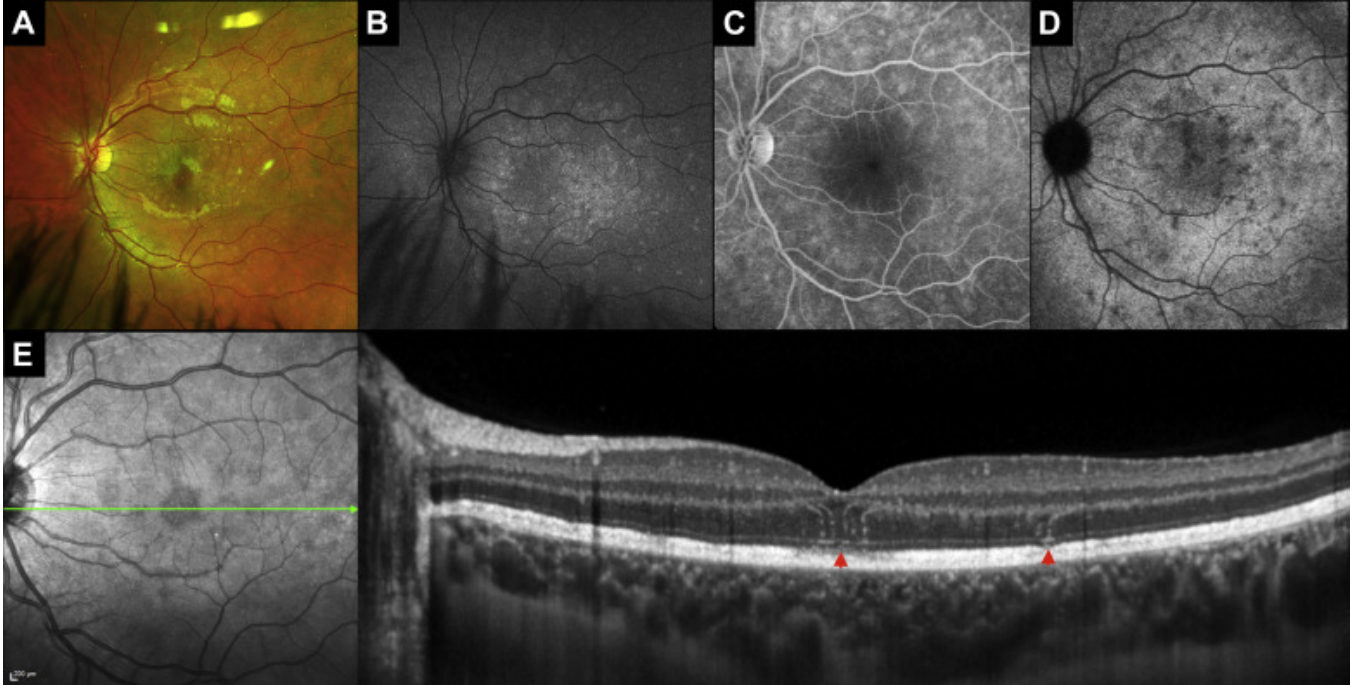


# Outer Retinal Plume Signature in Multiple Evanescent White Dot Syndrome



A 15-year-old boy was diagnosed with multiple evanescent white dot syndrome. Fundus photography showed yellow foveal lesion and scattered deep white retinal lesions (**A**). Fundus autofluorescence revealed hyperautofluorescent areas (**B**) corresponding to hyperfluorescent spots on late-phase fluorescein angiography (**C**) and hypofluorescent spots on late-phase indocyanine green angiography (**D**). OCT demonstrated focal disruptions of the ellipsoid zone with hyperreflective Jampol dots clustered vertically along the Henle fibers (**E**, arrowheads). The outer retinal plume signature is a distinctive reflective pattern reminiscent of a windswept volcanic plume created possibly by photoreceptor debris shedding and tracking along the Henle fibers.