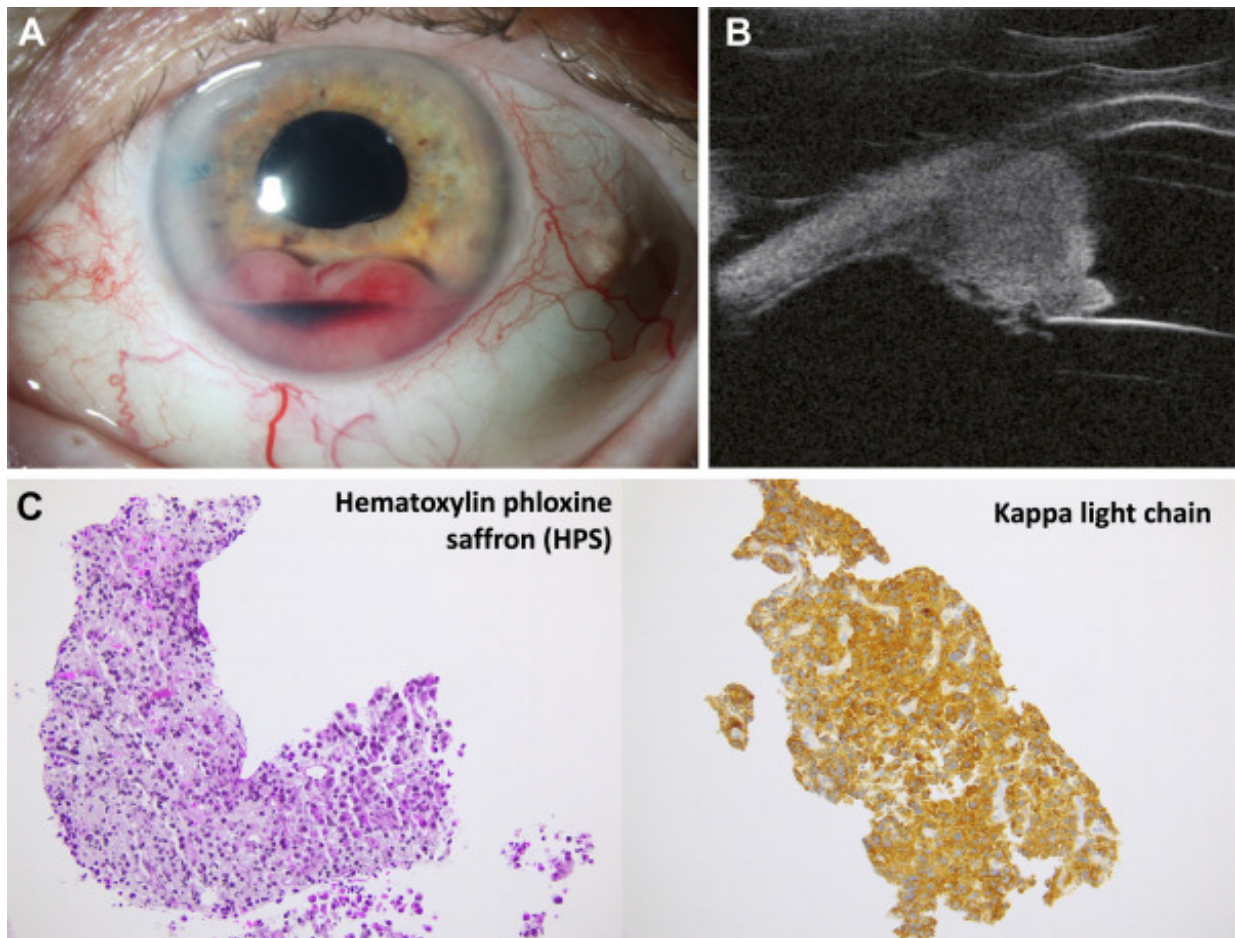


Iris Plasmacytoma in Multiple Myeloma



A 74-year-old woman, under complete remission for a multiple myeloma, presented with painless blurred vision in her left eye. Visual acuity was 20/40 with intraocular pressure of 27 mmHg. Examination revealed a hemorrhagic whitish iris mass (**A**, **B**). Iris biopsy demonstrated a monoclonal plasma cell infiltration, with positive immunoreactivity for kappa light chains (**C**), consistent with the diagnosis of iris plasmacytoma. In the absence of systemic recurrence, a local 40 Gy radiotherapy treatment was delivered to the eye, allowing the total regression of the lesion. Ocular plasmacytoma is a rare condition but should be considered in the context of multiple myeloma with tumor

proliferation of the eye or adnexa. (Magnified version of Figure **A-C** is available online at www.aaojournal.org).