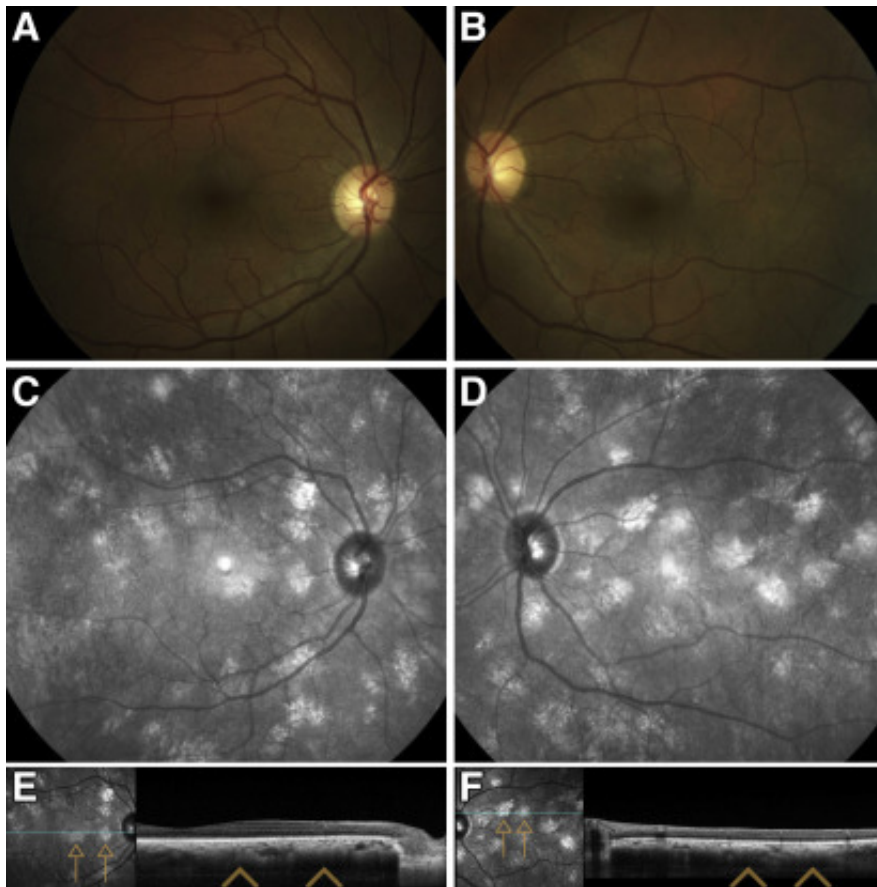


Neurofibromatosis 1: At a Different Wavelength



A man with neurofibromatosis 1 had an ocular examination, with Lisch nodules in both eyes and a corkscrew retinal vessel on the superior temporal arcade in the right eye (**A** and **B**). Upon initial focus with a Canon Non-Mydriatic Retinal Camera CR-DGi using near-infrared light at wavelength 780 to 820 nm, multiple irregularly shaped white spots from 1/5 to 1/2 disc diameter, deep to the retinal vessels, appeared (**C** and **D**). These nodules were visible on OCT (**E** and **F**). This illustrates a technique to screen for choroidal nodules in patients with neurofibromatosis 1 with in-office fundus cameras that use near-infrared light for focusing.

Article info

Copyright

