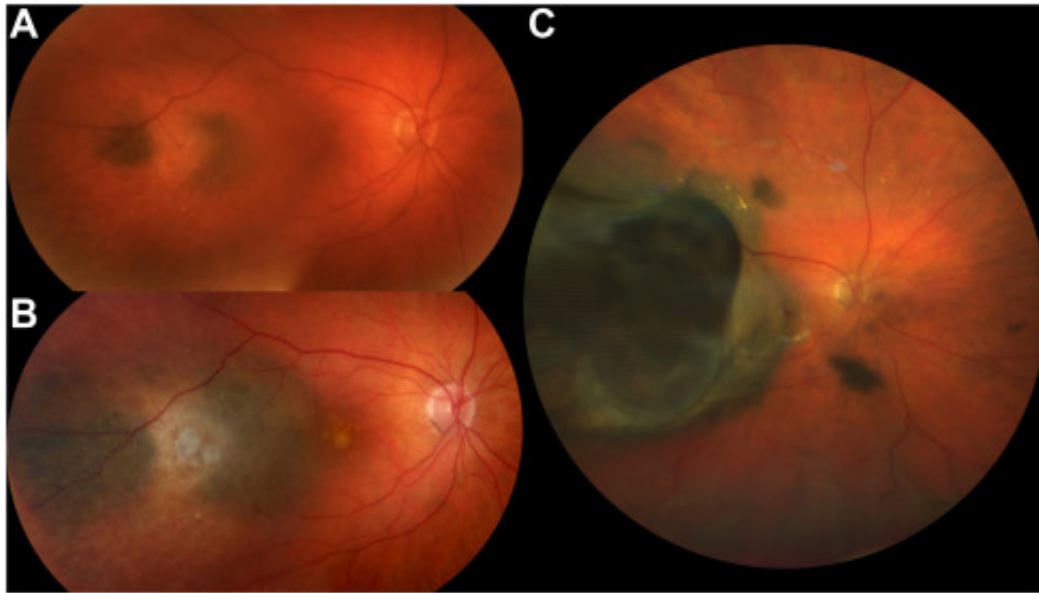


# Choroidal Nevus with Growth into Melanoma over 10 Years



An 80-year-old woman was diagnosed with a choroidal nevus. The largest basal diameter of the choroidal nevus was 6.0 mm, and its thickness was 1.1 mm (Fig **A**). After 6 years of regular follow-up, the nevus enlarged and was reclassified as low-grade choroidal melanoma (largest basal diameter, 8.0 mm; thickness, 2.8 mm) (Fig **B**). She refused treatment for 4 additional years. Her visual acuity dropped from 20/20 to counting fingers. The tumor grew to a diameter of 17.0 mm (largest basal diameter) and a thickness of 8.0 mm. A break in Bruch's membrane, retinal invasion, and vitreous seeding developed (Fig **C**). The average growth rate of thickness of the melanoma was 1.2 mm/y during the 4 years without treatment. She eventually underwent plaque radiotherapy. (Magnified version of Fig **A-C** is available online at [www.ophthalmologyretina.org](http://www.ophthalmologyretina.org)).