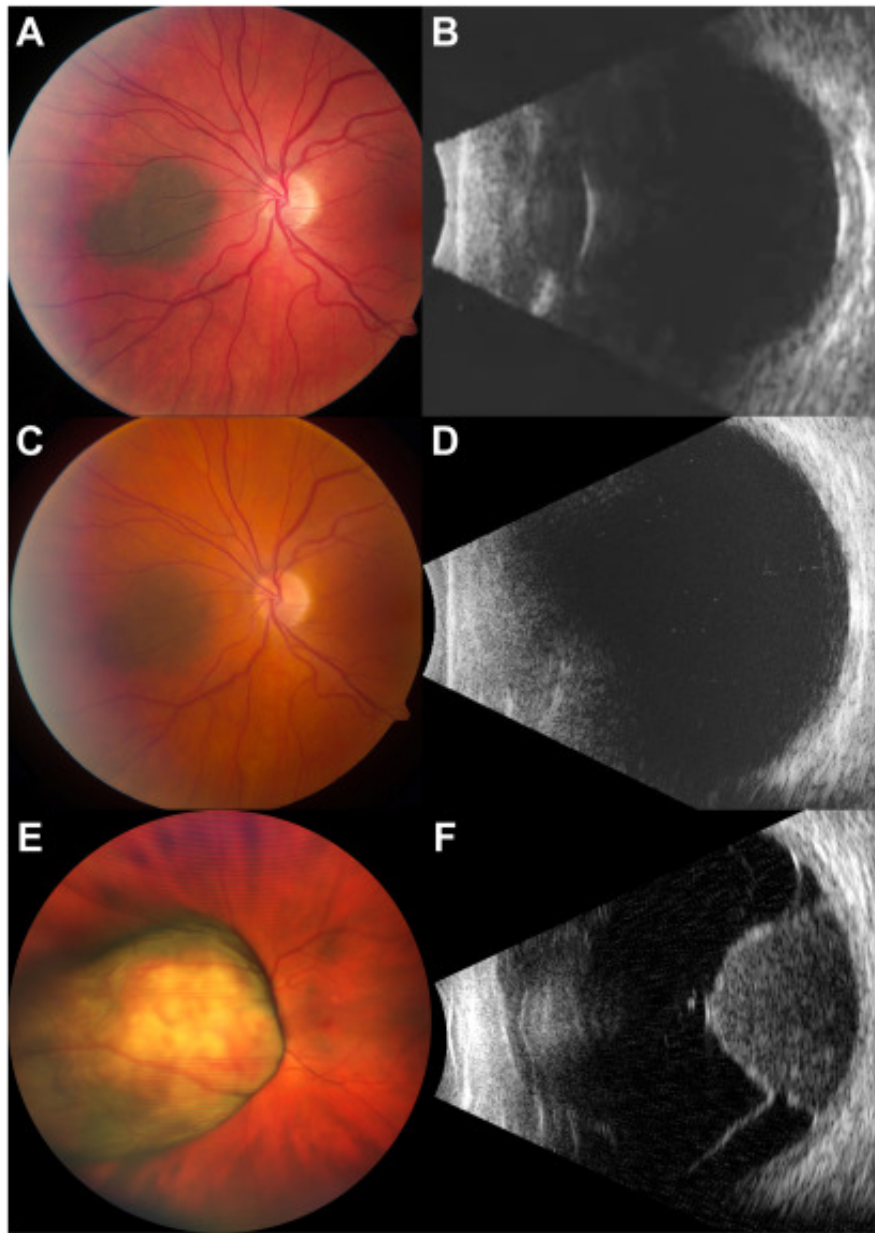


Flat Choroidal Nevus Growth into Melanoma at 23-Year Follow-up



In 1999, a 48-year-old White woman was found to have a pigmented choroidal nevus in the left eye, nasal to the optic disc, measuring 5 × 4 mm in base (**A**) and 1 mm in thickness (**B**). Observation was recommended, and the nevus was stable when last examined in 2010 (**C**, **D**). The patient was lost to follow-up for 12 years. At 23-years follow-up, the nevus had grown into a mushroom-shaped melanoma measuring 16 × 14 mm in base (**E**) and 10 mm in thickness (**F**), overhanging the optic disc. Plaque radiotherapy (deep notched) was performed. This case reminds us that all choroidal nevi, even flat nevi, should be monitored on a routine

basis. (Magnified version of Figure **A-D** is available online at www.ophthalmologyretina.org).

Article info

Publication history

Published online: May 22, 2023

Copyright

© 2023 by the American Academy of Ophthalmology