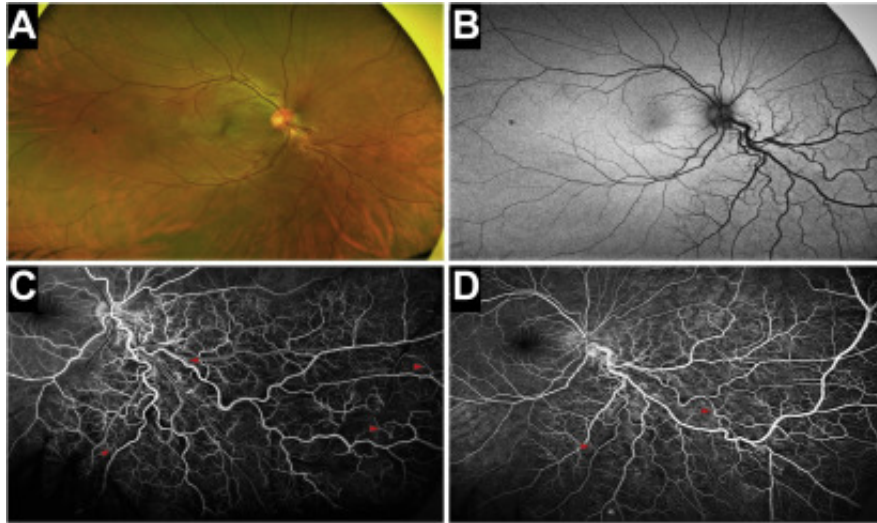


# Ultra-Widefield Imaging of a Patient with Extensive Retinal Arteriovenous Malformation



Incidental fundus examination of a patient with visual acuity of 20/20 in both eyes revealed abnormally dilated and tortuous vascular bed extending from the optic disc to the far periphery in the inferonasal quadrant of the right eye. Left eye fundus findings were normal. Ultra-widefield (A) and red-free (B) imaging confirmed these findings. Arteriovenous phase (C) and venous phase (D) angiograms revealed a large number of communicating vessels (arrowheads) between arterial and venous networks. A few microaneurysms also were seen. The anomaly involves vessels of all caliber without significant capillary nonperfusion.

## Article info

## Copyright

© 2021 by the American Academy of Ophthalmology