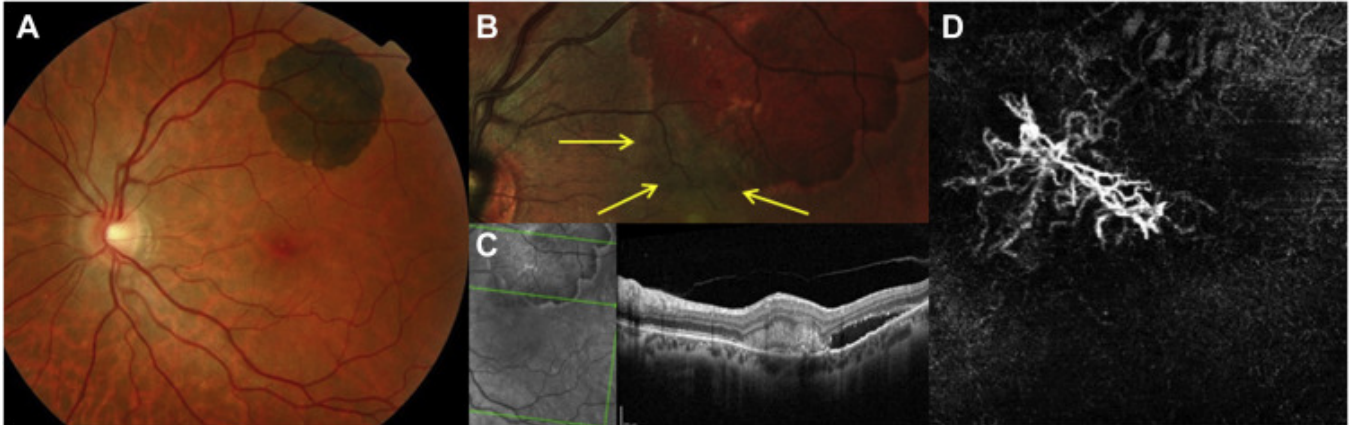


Congenital Hypertrophy of the Retinal Pigment Epithelium Complicated by Choroidal Neovascularization



A 51-year-old woman with a previously diagnosed solitary lesion of congenital hypertrophy of the retinal pigment epithelium (**A**) complained of recent metamorphopsia and moderate vision loss (visual acuity: 20/32). **B**, Color fundus photography showed a grayish area located at the inferonasal margin of the lesion (arrows). **C**, B-scan OCT passing through this area showed a subretinal hyperreflective exudative lesion associated with a serous retinal detachment. **D**, OCT angiography showed a discrete lacy vascular lesion, confirming choroidal neovascularization. Congenital hypertrophy of the retinal pigment epithelium may occasionally be complicated by choroidal neovascularization, which can be easily and noninvasively diagnosed using OCT angiography.