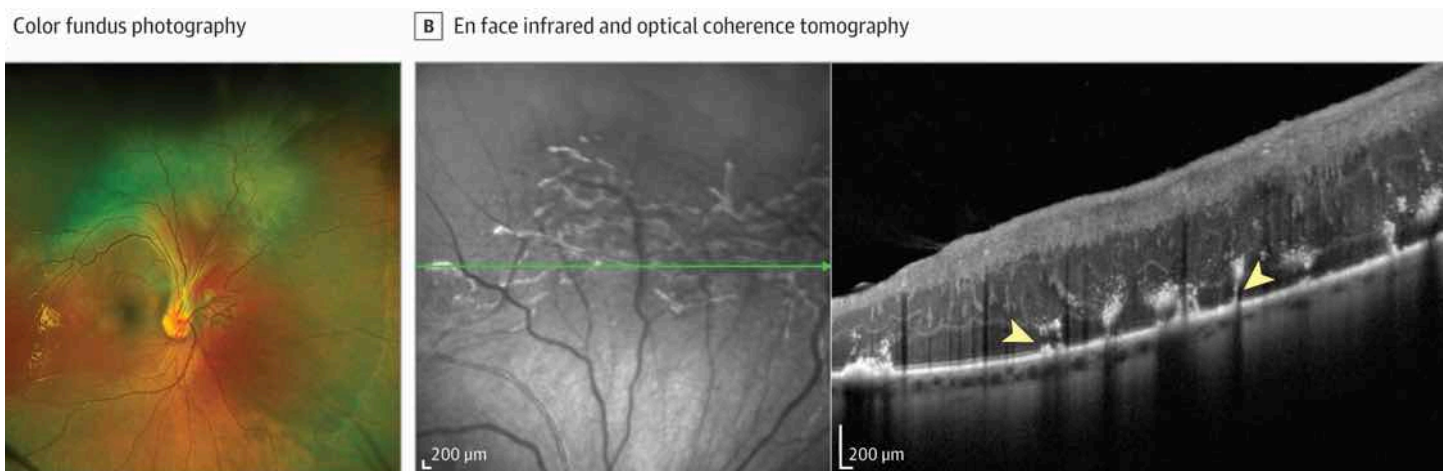


Filamentous RPE Hyperplasia in Combined Hamartoma of the Retina and RPE

Jason Fan, MD, PhD¹; Natasha Ferreira Santos da Cruz, MD¹; Audina M. Berrocal, MD¹



A 3-year-old female child was referred for a retinal lesion in the right eye. Her ocular history included amblyopia, myopia, and exotropia of the right eye. Snellen visual acuity was 20/60 with correction OU, and intraocular pressures were normal. Anterior segment examination was unremarkable, and fundus examination revealed a fibrotic hyperpigmented lesion extending superiorly from the optic disc in the right eye (Figure, A). Optical coherence tomography of the lesion disclosed retinal thickening with disorganization of the retinal layers (Figure, B). En face near-infrared imaging showed hyperreflective, filamentous, branching lines within the lesion, which on cross-section appeared as discrete collections of hyperreflective foci extending from the retinal pigment epithelium (RPE) into the outer retina consistent with hyperplasia of the RPE. The patient was diagnosed with a combined hamartoma of the retina and RPE with filamentous RPE hyperplasia. Observation was recommended because the lesion did not involve the macula.

