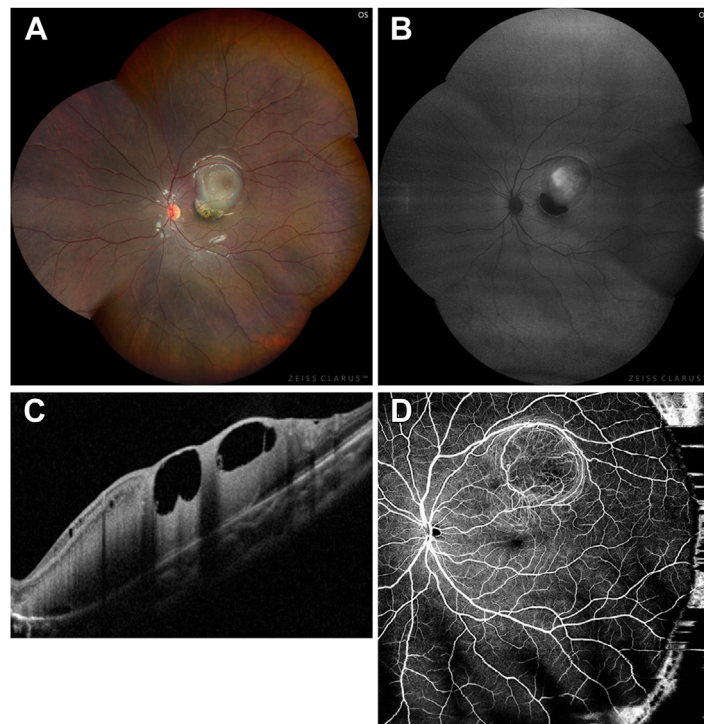


12. Gonzalez VH, Campbell J, Holekamp NM, et al. Early and long-term responses to anti-vascular endothelial growth factor therapy in diabetic macular edema: analysis of protocol I data. *Am J Ophthalmol*. 2016;172:72–79. <https://doi.org/10.1016/j.ajo.2016.09.012>.
13. Singh RP, Pieramici DJ, Wang PW, Gune S. Long-term vision outcomes in patients with DME and a limited early visual response to ranibizumab in RIDE and RISE. *Ophthalmic Surg Lasers Imaging Retina*. 2020;51:210–218. <https://doi.org/10.3928/23258160-20200326-02>.
14. Pieramici D, Singh RP, Gibson A, et al. Outcomes of diabetic macular edema eyes with limited early response in the VISTA and VIVID studies. *Ophthalmol Retina*. 2018;2:558–566. <https://doi.org/10.1016/j.oret.2017.10.014>.
15. Guber J, Josifova T, Henrich PB, Guber I. Clinical risk factors for poor anatomic response to ranibizumab in neovascular age-related macular degeneration. *Open Ophthalmol J*. 2014;8:3–6. <https://doi.org/10.2174/1874364101408010003>.
16. Usui-Ouchi A, Tamaki A, Sakanishi Y, et al. Factors affecting a short-term response to anti-VEGF therapy in diabetic macular edema. *Life (Basel)*. 2021;11:83. <https://doi.org/10.3390/life11020083>.
17. Menke MN, Ebnetter A, Zinkernagel MS, Wolf S. Differentiation between good and low-responders to intravitreal ranibizumab for macular edema secondary to retinal vein occlusion. *J Ophthalmol*. 2016;2016:9875741. <https://doi.org/10.1155/2016/9875741>.
18. Wallsh JO, Gallemore RP. Anti-VEGF-resistant retinal diseases: a review of the latest treatment options. *Cells*. 2021;10:1049. <https://doi.org/10.3390/cells10051049>.

Pictures & Perspectives



Multimodal Imaging of a Retinocytoma

A 12-year-old girl was referred for poor vision since childhood. The best-corrected visual acuity was counting fingers in the left eye. A fundus examination showed an isolated, gray, round, elevated lesion in the central and superotemporal macula with chorioretinal atrophy at its inferior edge (A). The central part of the lesion was hyperautofluorescent (B) and the lesion had a homogenous appearance without shadowing on spectral-domain OCT with 2 cystic cavities toward its surface (C). The lesion showed independent vascularity on OCT angiography (D). Magnetic resonance imaging (not shown) indicated the mass was benign. A diagnosis of retinocytoma was made; the lesion remained stable over 4-year follow-up. (Magnified version of Figure A–D is available online at www.ophtalmologyretina.org).

XIAO LI, MD^{1,2,*}

YUQIAO JU, MD^{1,2,*}

XIN HUANG, PhD^{1,2}

¹Eye and ENT Hospital, Shanghai Medical College, Fudan University, Shanghai, China; ²Shanghai Key Laboratory of Visual Impairment and Restoration, Fudan University, Shanghai

*X.L. and Y.J. contributed equally to this work.