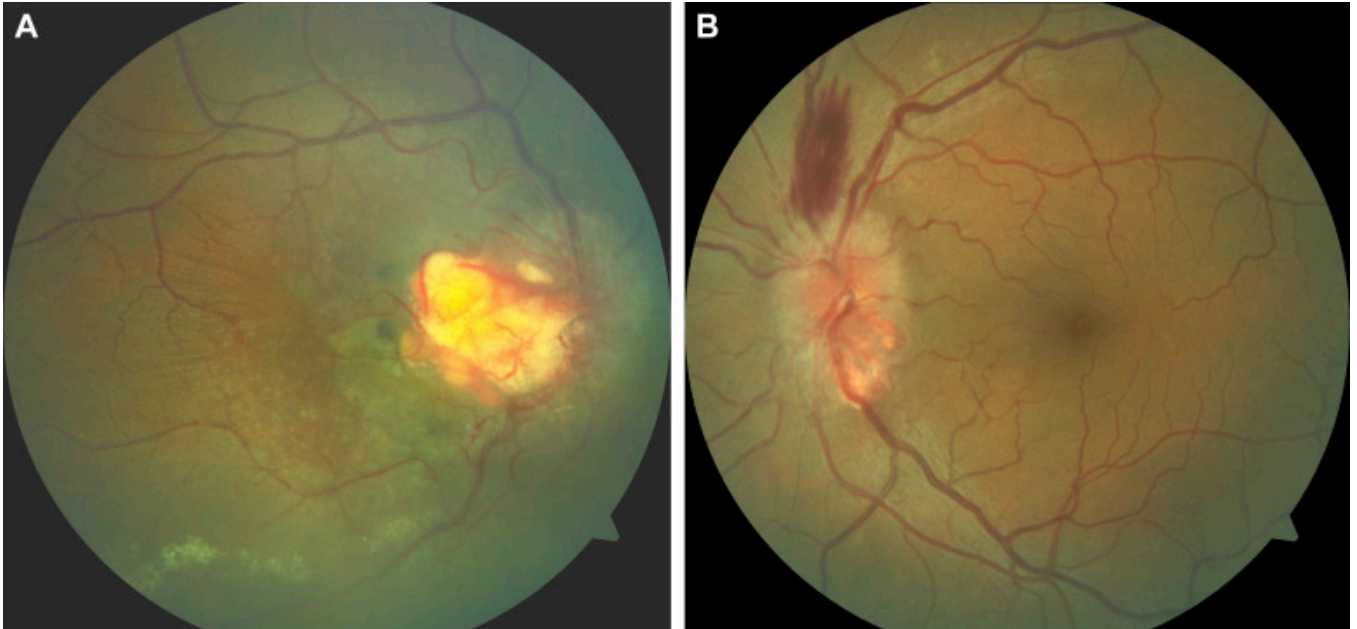


# Optic Disc Hemangioblastoma with Papilledema in a Case of Von Hippel-Lindau Disease



A 38-year-old woman was referred to our ophthalmology department with sudden diminution of vision in the right eye. Her best-corrected visual acuity in the right eye was 20/200 and that in left eye was 20/20. Dilated fundus examination revealed (A) a large vascular tumor arising from the optic disc extending to the fovea with underlying disc edema adjacent to the tumor and (B) disc edema along with a small vascular tumor arising from the disc. Magnetic resonance imaging of the brain revealed a large cerebellar hemangioblastoma causing increased intracranial tension leading to papilledema. Ultrasonogram of the abdomen revealed bilateral polycystic kidney disease. The presence of the above-mentioned features narrowed the diagnosis to Von Hippel Lindau disease.