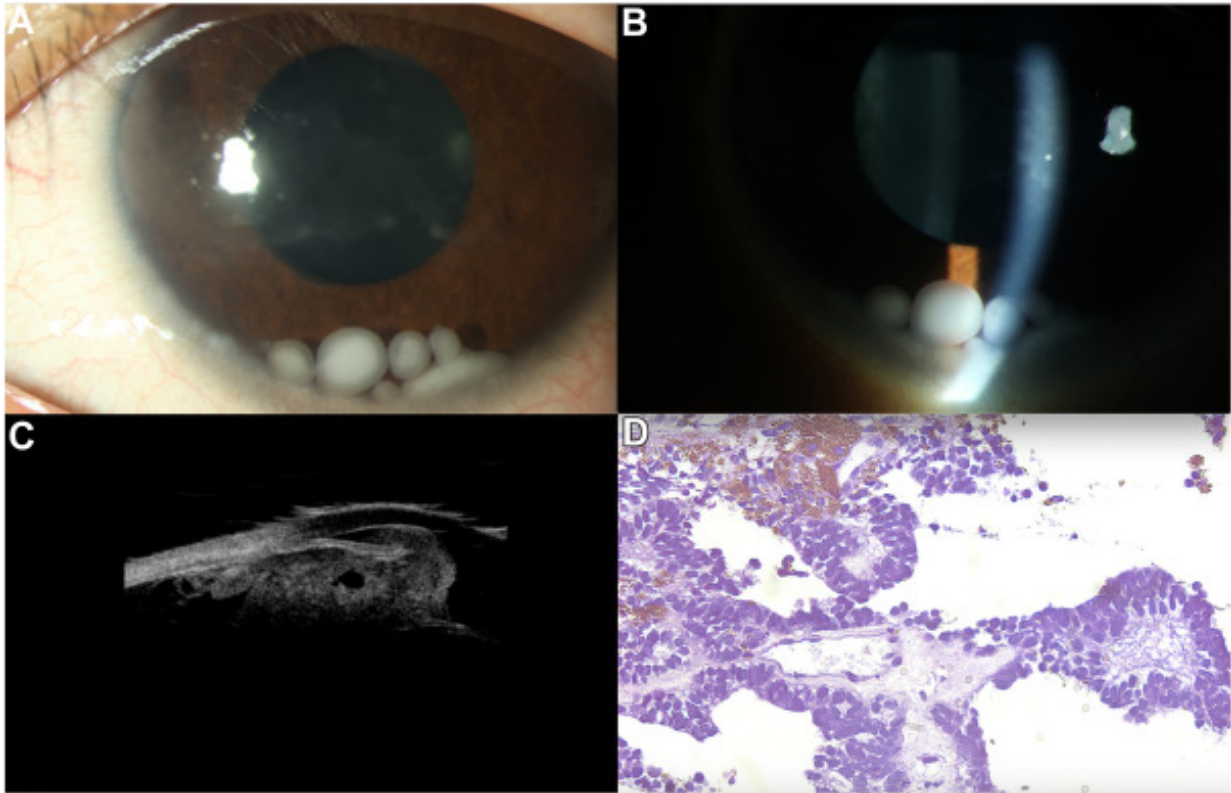


Pearl-Appearing "Pseudohypopyon" in a Child: Exclude Malignancy



A 5-year-old boy was found to have "leukocoria" and was referred for evaluation. Slit-lamp photography (**A**, **B**) showed multiple pearl-like, white cysts as "pseudohypopyon" in the anterior chamber with associated neovascularization. Ultrasound biomicroscopy (**C**) confirmed a medium reflective solid iridociliary mass with intratumoral cystic areas that proved on enucleation to be a nonteratoid malignant medulloepithelioma (**D**, hematoxylin and eosin $\times 40$). The patient had no signs of tumor recurrence or metastases after 5 years of follow-up. The pearl-like cysts can become a prominent sign of medulloepithelioma, and such a finding in a young person should

be investigated for medulloepithelioma that may be difficult to visualize for its occult location behind the iris. (Magnified version of Figure **A-D** is available online at www.aaojournal.org).