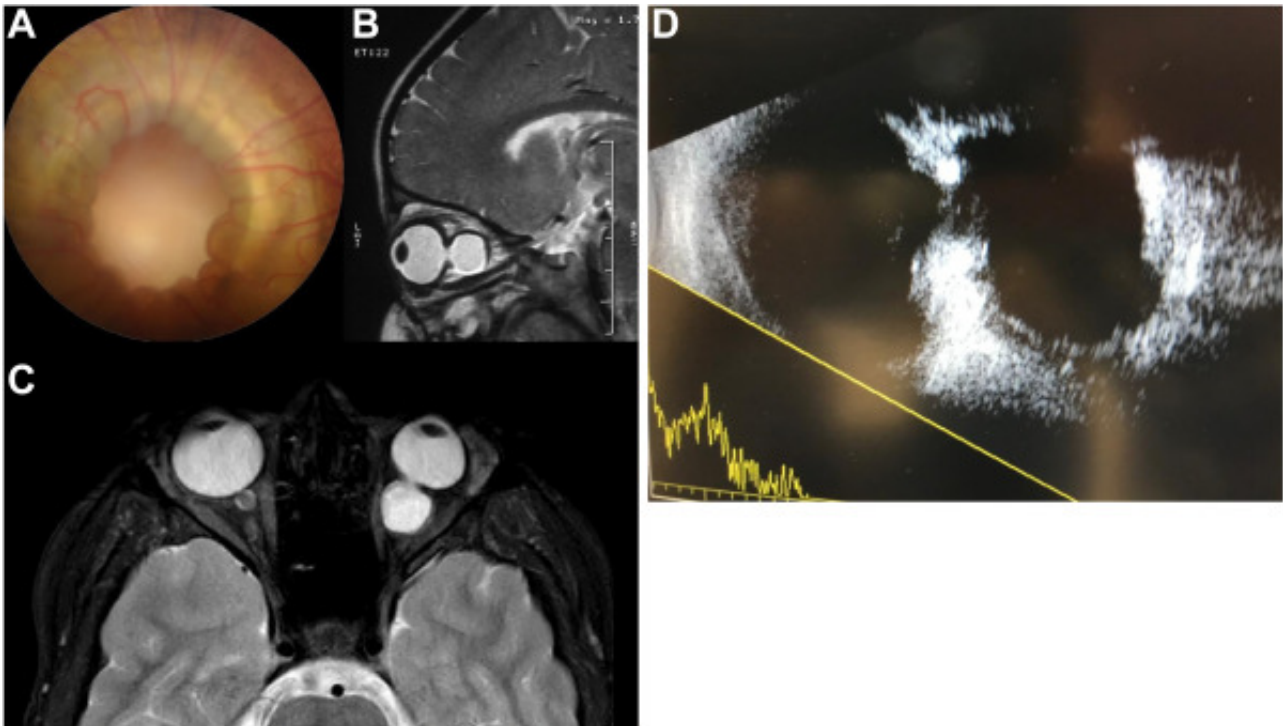


A Huge Posterior Staphyloma



A 10-year-old girl was referred for decreased vision in addition to exotropia in the left eye. The girl was healthy and had an unremarkable birth and family history. The patient's systemic examination, including neurologic assessment, was within normal limits.

Fundus examination of the left eye revealed a deep excavation in the posterior wall, and the optic disc was not visible (**A**). The sagittal magnetic resonance image demonstrated excavation in the posterior wall of the globe in the left orbit (**B**). The axial magnetic resonance T2-weighted lipid-suppressed image of the left orbit exhibited continuity of the excavation in the posterior wall of the globe and vitreous cavity (**C**). A B-mode ultrasonography image showed that the size of the excavation was almost equal to that of the globe (**D**). (Magnified version of Figure **A-D** is available online at www.opthalmologyretina.org)

Article info

Publication history

Published online: April 15, 2023

Copyright

© 2023 by the American Academy of Ophthalmology