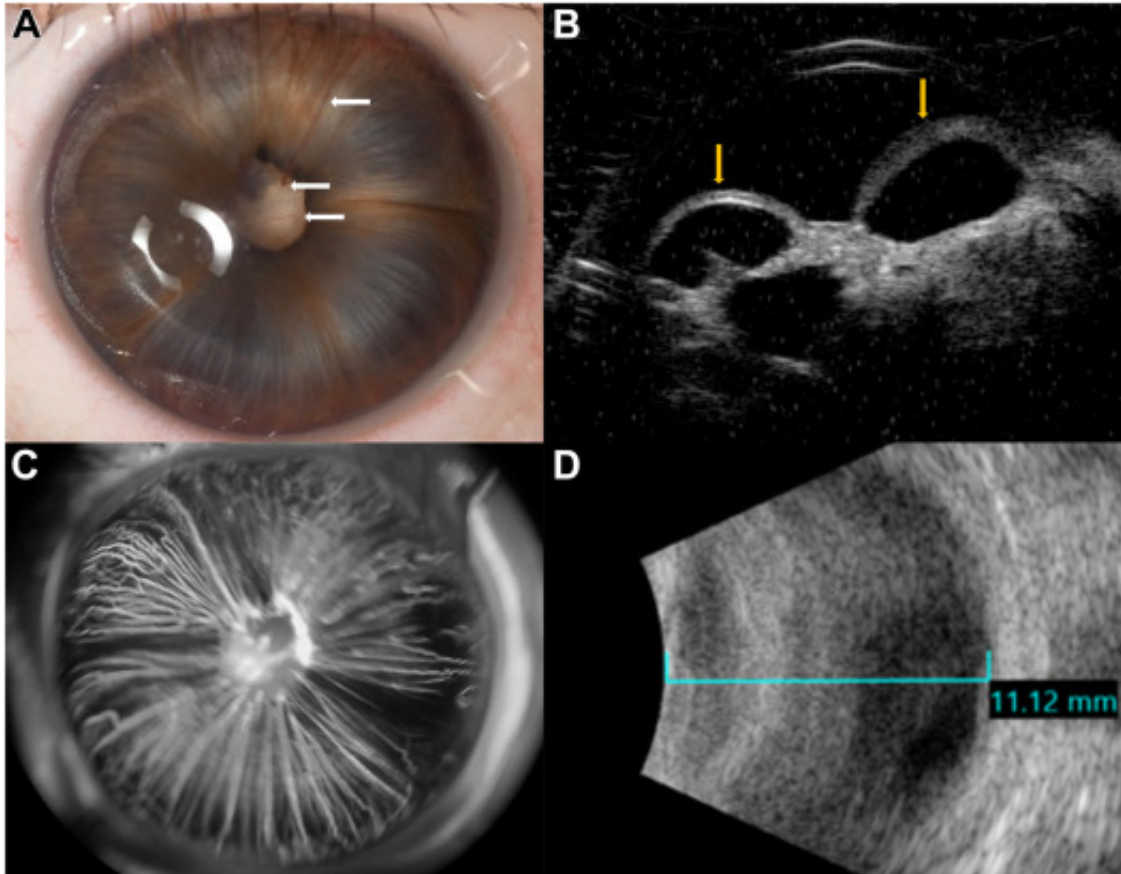


Iris Bombé due to Tunica Vasculosa Lentis from Persistent Fetal Vasculature



A 2-month-old girl was referred with leukocoria in her right eye (OD). Horizontal corneal diameter was 10.5 mm OD compared with 12.0 mm in her left eye (OS). Intraocular pressure of the OD was <4 mmHg (compared with 15 mmHg in the normal OS), with shallow anterior chamber, tunica vasculosa lentis (TVL) over the iris and lens capsule (**A**, arrows), and total iris bombé, confirmed on ultrasound biomicroscopy (**B**, arrows). Fundus fluorescein angiography revealed extensive hyperfluorescence of TVL in all quadrants (**C**) and ultrasonography showed microphthalmia with axial length 11.1 mm OD compared with 18.0 mm in the OS (**D**).

Iris bombé is a rare feature of TVL in persistent fetal vasculature spectrum. (Magnified version of Figure **A-D** is available online at www.aajournal.org).