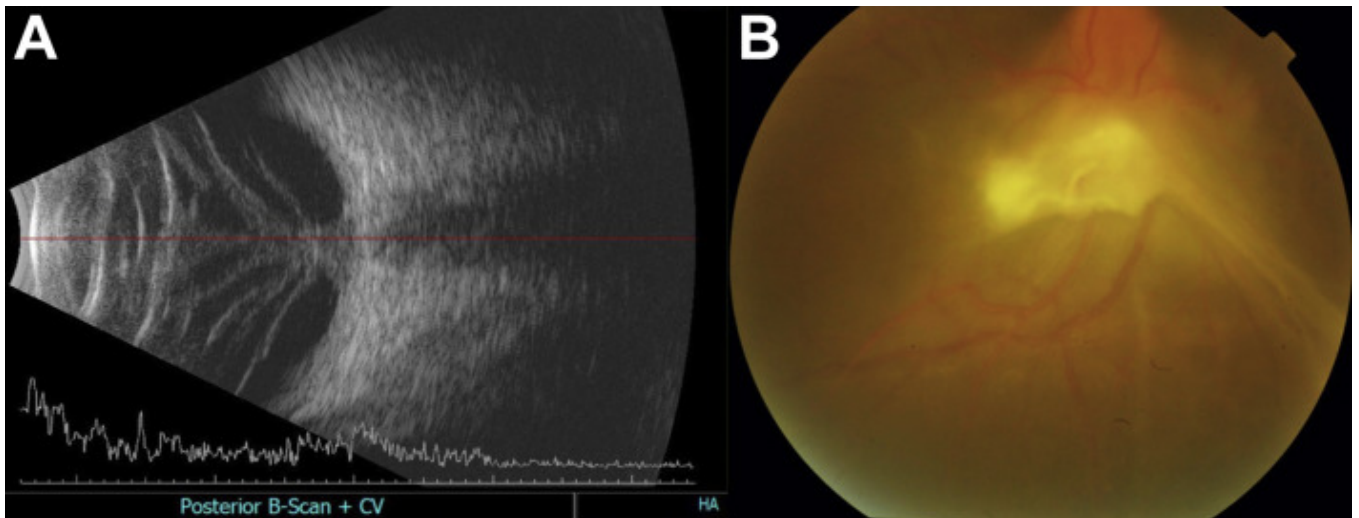


Laminaria-like Vitreoschisis in Persistent Fetal Vasculature



Examination of a 12-year-old girl, who demonstrated defective vision and exotropia of the right eye, showed vision of hand movements, normal anterior chamber, and no fundus view. Ultrasonography of the right eye showed moderately reflective multiple linear echoes with very minimal after-movements, suggesting multilayered fibrotic vitreoschisis with an adhesion at the optic disc (**A**). With the diagnosis of persistent fetal vasculature in the right eye, media-clearing vitrectomy with trimming of laminar vitreous stalks revealed tractional retinal detachment and folds at the posterior pole with residual vitreous stalk (**B**). The uniqueness of this case was the atypical multilaminar fibrotic vitreoschisis resembling laminaria seaweed on ultrasonography.