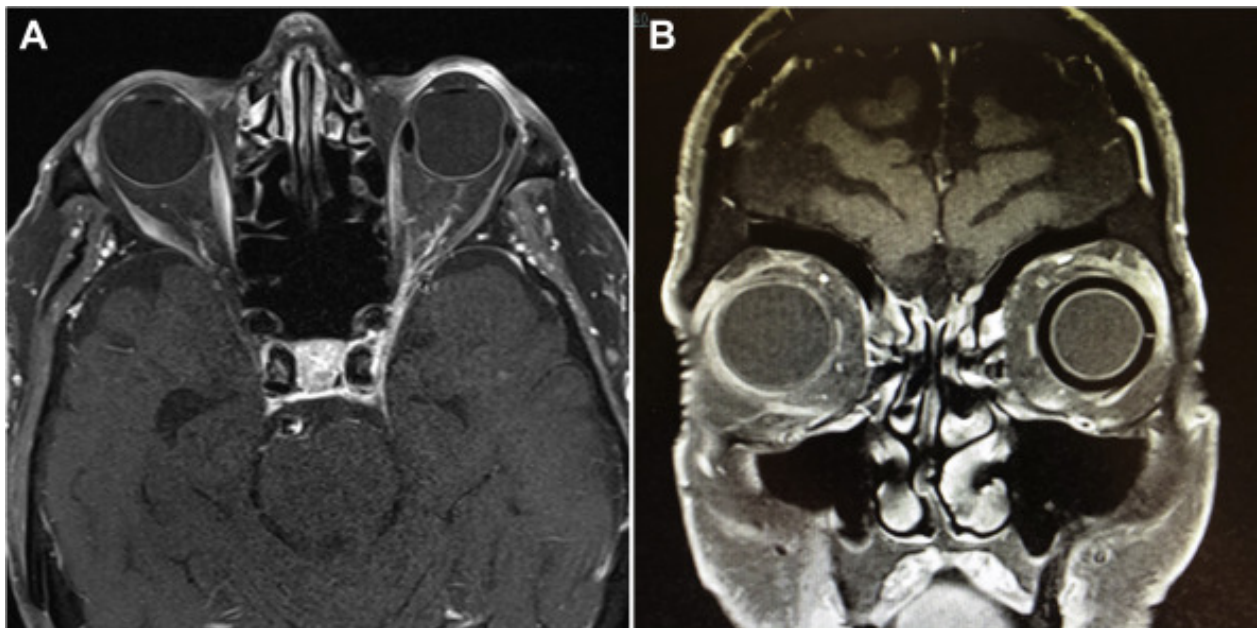


# Magnetic Resonance Imaging Appearance of a Scleral Buckle



A 90-year-old man underwent neuroimaging for evaluation of multiple cranial nerve palsies. He was noted to have an encircling silicone band around the left globe from prior retinal detachment repair. The silicone band appears non-enhancing and hypointense on magnetic resonance imaging. The scleral buckle is highlighted on these axial and coronal sections through the globe, showing the globe indentation and placement beneath the rectus muscles on the axial cut and the complete encircling band on the coronal cut (Magnified version of Fig A-B is available online at [www.aaojournal.org](http://www.aaojournal.org)).

## Article info

### Identification

DOI: <https://doi.org/10.1016/j.optha.2022.01.008>

# Copyright

© 2022 by the American Academy of Ophthalmology

**ScienceDirect**

[Access this article on ScienceDirect](#)