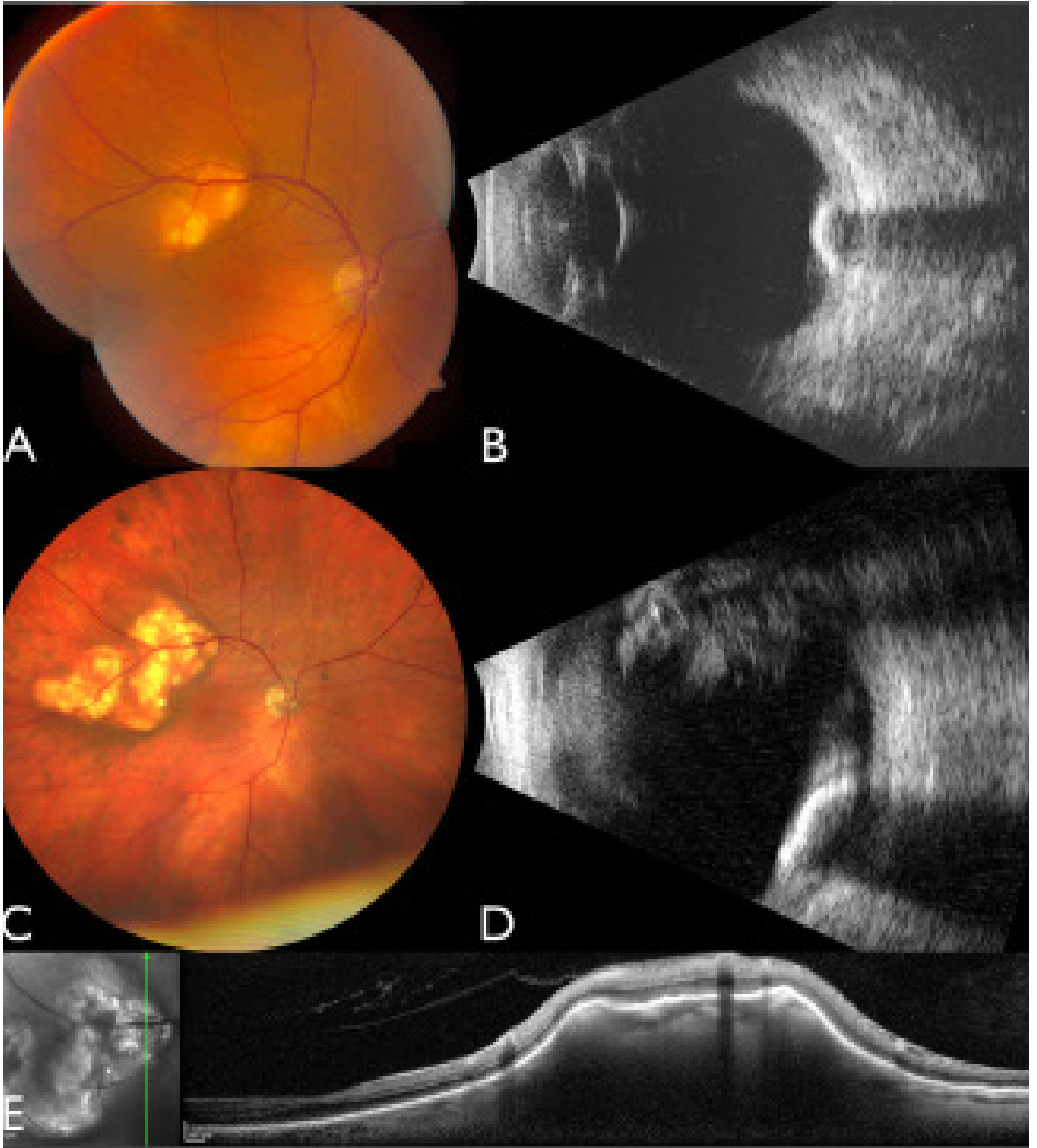


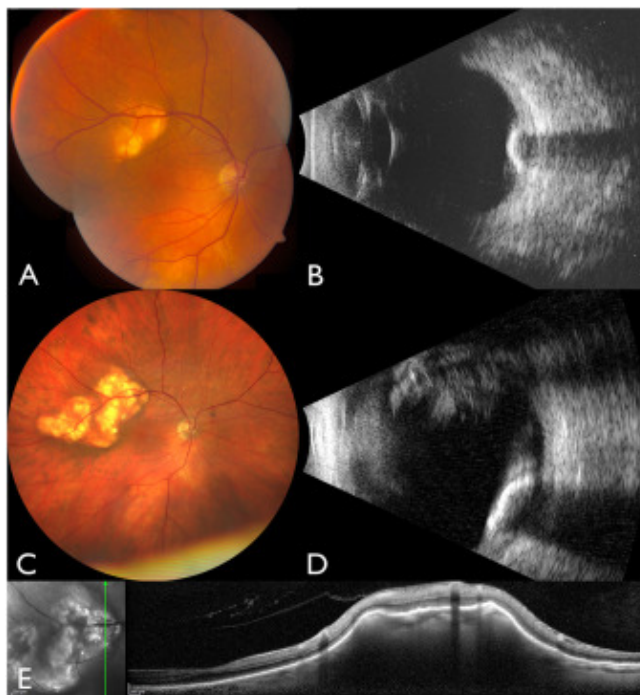
Sclerochoroidal calcification with slow enlargement in all dimensions over 13 years

Search for articles by this author



Sclerochoroidal calcification is a benign calcific deposition that rarely exhibits growth over time. A 68-year-old white male was found to have an amelanotic lesion in his right eye suspicious for choroidal melanoma. Fundus evaluation showed a deep yellow mass measuring 5 × 4 mm at the base (Fig. 1A). Ultrasound demonstrated an echodensity with a thickness of 3.5 mm consistent with sclerochoroidal calcification (Fig. 1B). Examination of the left eye was

unremarkable. Parathyroid hormone, vitamin D, and electrolytes were within normal limits. At 13 years of follow-up, the mass in the right eye had enlarged in all dimensions, measuring 9×7 mm at the base (Fig. 1C) and 4.9 mm in thickness (Fig. 1D). Optical coherence tomography (Fig. 1E) showed a classic “table mountain” lesion confined to the sclera and with irregular compression of the overlying choroid, confirming the diagnosis of sclerochoroidal calcification. Continued observation was recommended.



To read this article in full you will need to make a payment

Article info

Publication history

Published online: June 19, 2023

Accepted: May 25, 2023

Received in revised form: May 9, 2023

Received: April 12, 2023

Identification

DOI: <https://doi.org/10.1016/j.jcjo.2023.05.016>

Copyright

© 2023 Canadian Ophthalmological Society. Published by Elsevier Inc. All rights reserved.

ScienceDirect

[Access this article on ScienceDirect](#)

Related Articles