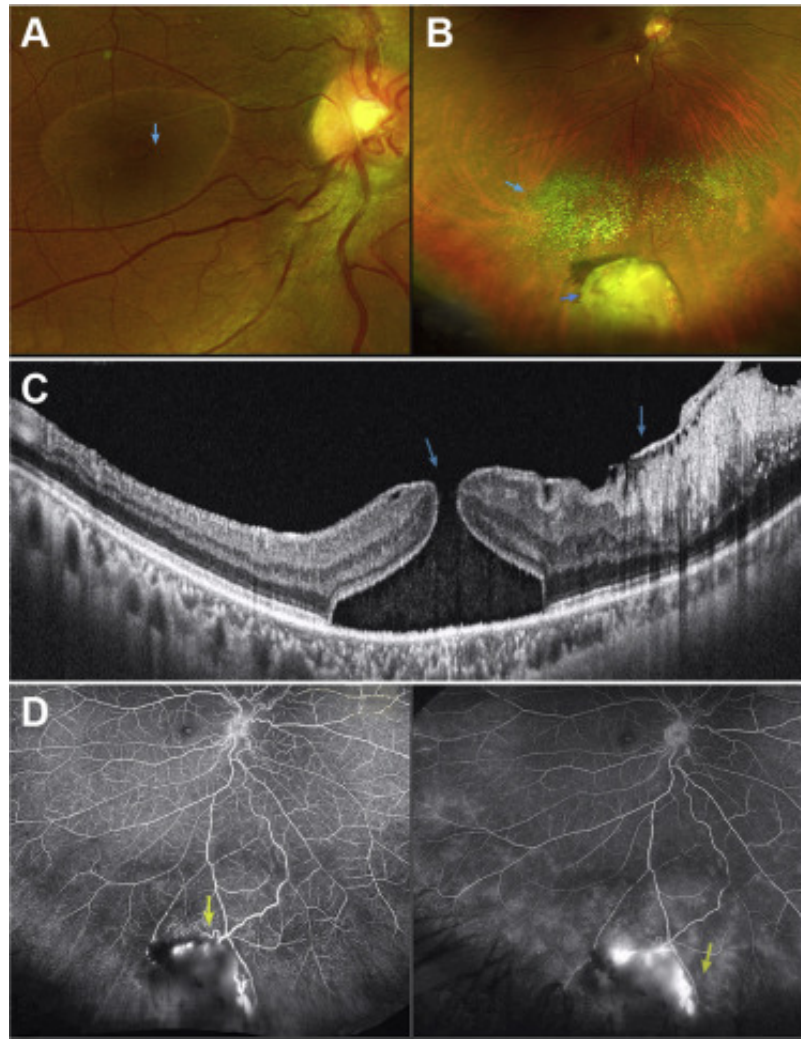


Macular Hole in a Patient with a Vasoproliferative Tumor



A 48-year-old woman sought treatment for diminution of vision in the right eye. The anterior segment was normal in both eyes. Fundus examination revealed a full-thickness macular hole (FTMH) associated with subretinal fluid (arrow) and an epiretinal membrane (ERM) (A). Inferiorly, a yellow dome-shaped subretinal mass with overlying telangiectatic vessels and dispersed refractile cholesterol crystals (arrow) in the vitreous (B) was present. Swept-source OCT confirmed the FTMH with subretinal fluid and ERM (arrow) (C). Ultra-widefield fluorescein angiography showed a dilated tortuous feeder vessel and late leakage from the telangiectatic vessels (arrow) (D). Systemic corticosteroids were prescribed and focal laser treatment was administered to the lesion.