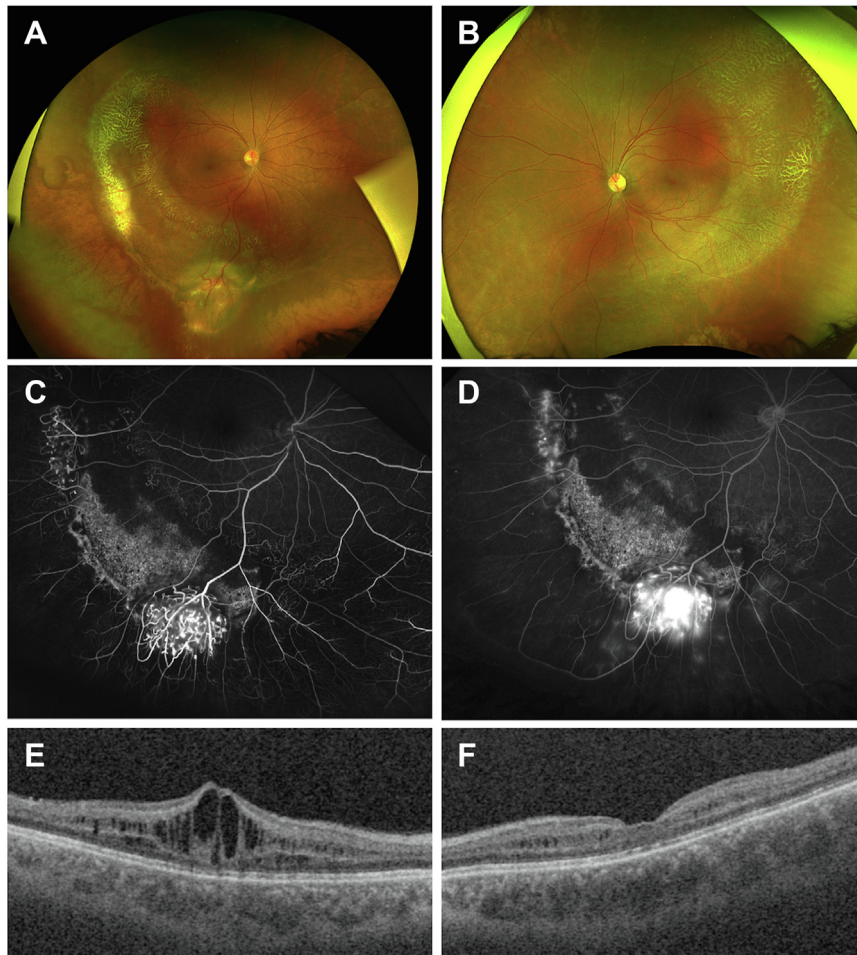


20. Jain A, Chea S, Matsumiya W, et al. Severe vision loss secondary to retinal arteriolar occlusions after multiple intravitreal brolucizumab administrations. *Am J Ophthalmol Case Rep.* 2020;18:100687. <https://doi.org/10.1016/j.ajoc.2020.100687>.
21. Pearce I, Amoaku W, Bailey C, et al. The changing landscape for the management of patients with neovascular AMD: brolucizumab in clinical practice. *Eye (Lond).* 2022;36:1725–1734.
22. Kilmartin DJ. Literature review and proposal of best practice for ophthalmologists: monitoring of patients following intravitreal brolucizumab therapy. *Ir J Med Sci.* 2022;192:447–456.
23. Sadda SR, Holz FG, Staurenghi G, et al. The importance of imaging to identify early signs of intraocular inflammation: expert opinion for brolucizumab. *Ophthalmologica.* 2022;245:588–591.

## Pictures & Perspectives



### Vasoproliferative Tumor in X-Linked Retinoschisis

A 26-year-old man presented with decreased vision in both eyes since childhood. Corrected visual acuity was 20/80 right eye (OD) and 20/30 left eye. Fundus in both eyes revealed central cart-wheel appearance and inferotemporal schisis (A, B). An orange-red lesion was noted in the inferotemporal quadrant OD, which showed early filling and late leakage on fluorescein angiography images (C, D). Macular schisis was confirmed in both eyes with OCT (E, F). Genetic evaluation revealed a hemizygous missense variant in exon [c.590G>A (p.Arg197His)] of the *RS1* gene (chrX:g.18642089C>T). A diagnosis of X-linked retinoschisis with vasoproliferative tumor OD was made. The patient was advised topical dorzolamide and laser photocoagulation for vasoproliferative tumor. (Magnified version of Figure A-F is available online at [www.ophtalmologyretina.org](http://www.ophtalmologyretina.org)).

VINOD KUMAR, MS, FRCS (GLASG)

LAVANYA GANDEPALLI, MBBS

Dr Rajendra Prasad Centre for Ophthalmic Sciences, All India Institute of Ophthalmic Sciences, New Delhi, India